

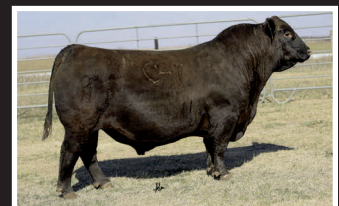
# FOCUSED ON THE FEMALE



genetics guide

2026

**SIRES DESIGNED** TO KEEP YOU  
IN THE **COW BUSINESS!**



ALL TIME  
SALES LEADERS



# FOCUSED ON THE FEMALE

*CELEBRATING 10 YEARS OF MATERNAL FOCUS*

In 2015, we were becoming increasingly concerned about the type of beef genetics the commercial A.I. industry was focusing on. Consumer preferences told the market that high quality beef was demanded. And, with new selection indexes, the direction seemed to be a never ending chase for terminal traits with little regard for some of the fundamentals that make good cows. This led us to the decision to start sourcing Sires with emphasis on the things that make cows productive and long-lasting. We rolled out the first BEEF-360 Genetics Guide in the winter of 2016.

Carcass vs Cow - We have never thought this was an either/or proposition, but a balanced approach is best. When we have the basics of profitable cows in place - fertility, structural integrity, efficient utilization of feed resources, ease of handling and longevity - we can then put more emphasis on traits which may add value in the feedlot and on the plate. But, without the right cow(s) - we never get there. And, with the costs and time required to develop females, we need to be confident that we are choosing the best genetics for the long haul.

In our continual quest for maternally-focused Sires, we have built tremendous relationships with some of the best cattle breeders in the world. Thank you to our Sire Partners for putting your trust in us and the vision of the BEEF-360 brand! This 10th Anniversary edition of our Genetics Guide is the most proven, diverse and complete line-up of elite Sires we have ever offered. Rest assured - they are presented to you with our continual commitment: BEEF-360 is "Focused on the Female"!





*Kate Roberts*

271AN1105

# KOUPALS B&B HERDSMAN

S A V RENOWN 3439 #  
**COLEMAN GLACIER 041**  
 COLEMAN DONNA 439 #  
 X  
 LT PHOENIX 5048  
**B&B PRIDE 711**  
 B&B PRIDE 4170 #

TRAIT	CED	BW	WW	YW	YH	SC	HP	CEM	MILK	TEAT	UDDR	FL	MW	MH	SEN	DOC	CLAW	ANGLE	PAP	HS	CW	Marb	RE	Fat	\$M	\$W	\$F	\$G	\$B	\$C
EPD	-2	4.0	76	132	.7	1.84	13.7	6	31	.68	.42	1.12	43	.3	-9	25	.17	.30	1.82	.19	53	.14	.48	-.001	112	77	79	27	106	249
ACC.	.33	.51	.43	.38	.42	.48	.18	.30	.33	.33	.32	.37	.37	.38		.34	.28	.28	.24	.28	.37	.35	.34	.42						
%RANK	95	95	30	35	35	5	20	70	20	25	80	25	85	65	30	25	1	2	65	10	60	95	80	30	1	25	80	95	95	65

OWNED BY:  
 MR ANGUS RANCH, WHEATLAND WY  
 KOUPALS B&B ANGUS, DANTE SD



Herdsmen was one of the true highlights of the 2025 sales season. As the lead-off Lot 1 feature at Koupals B&B Angus, Herdsmen topped the sale - selected by one of the most respected and discerning operations in real ranching country, MR Angus. Herdsmen brings true power, substance and structure while being backed by some of the most predictable maternal value in the industry. Within his contemporary group - Herdsmen was the #1 adjusted weaning weight and #2 adjusted yearling weight. He sported a 128 IMF ratio and 109 REA ratio. Herdsmen's dam, Pride 711, is the up-and-coming elite donor in the Koupals B&B program - earning her place due to impeccable feet, fertility and production. True power, performance and maternal - real world value!

**AAA 21102648**

**KOUPALS B&B HERDSMAN 4026**

TATTOO: 4026  
 BORN: 01/02/2024  
 BIRTH WEIGHT: 86  
 205 DAY ADJ. WT: 850 (ET)  
 365 DAY ADJ. WT: 1509 (ET)

**Semen \$30/Cert. \$40**

DAM - B & B PRIDE 711





271AN4970

U-2 COALITION 206C #  
**S WRANGLER 830**  
 S ERICA 6169

X

LISCO GRAND FINALE 4103  
**M DIAMOND ERICA 049**  
 M DIAMOND ERICA 907

**M DIAMOND**  
**R ANAHAN**

TRAIT	CED	BW	WW	YW	YH	SC	HP	CEM	MILK	TEAT	UDDR	FL	MW	MH	SEN	DOC	CLAW	ANGLE	PAP	HS	CW	Marb	RE	Fat	\$M	\$W	\$F	\$G	\$B	\$C
EPD	11	1.0	84	140	.5	.89	13.3	9	27	.25	.19	1.02	78	.4	-.25	31	.41	.54	-2.19	.28	72	.84	1.22	.041	77	88	127	67	195	330
ACC.	.69	.88	.84	.43	.55	.46	.17	.28	.29	.26	.25	.31	.34	.36		.43	.23	.23	.30	.21	.41	.34	.34	.31						
%RANK	20	45	15	20	50	50	25	40	45	95	95	65	35	50	70	5	20	85	3	15	15	30	4	75	25	10	10	25	15	10

OWNED BY:  
 LISCO ANGUS - DOUGLAS WY  
 M DIAMOND ANGUS - GLENROCK WY



**Ranahan - a top ranch hand; a good all-around cowboy!**  
 Fitting for this outstanding Wrangler son. Ranahan is the complete package - deep bodied, heavy muscled, stout structured with tremendous feet and a commanding herd-bull presence! Add in calving ease, performance, maternal predictability, carcass value and the Coalition disposition and you have the ideal all-around cowboy! With a pedigree outcross to much of today's mainstream genetics, Ranahan is an easy Sire to use - and for all the right reasons. His progeny will be a highlight of this year's sales season.

AAA 20258264

M DIAMOND RANAHAN 111

TATTOO: 111  
 BORN: 02/18/2021  
 BIRTH WEIGHT: 78  
 205 DAY ADJ. WT: 741 (115 RATIO)  
 365 DAY ADJ. WT: 1233

Semen \$30/Cert. \$40

DAM - M DIAMOND ERICA 049



SON - SCOTT ANGUS CATTLE, NE





271AN4287

# S WRANGLER

HF SYNDICATE 213Z  
**U-2 COALITION 206C #**  
 U2 ERELITE 109Z  
 X  
 S WHITLOCK 179 #  
**S ERICA 6196**  
 S ERICA 3441

TRAIT	CED	BW	WW	YW	YH	SC	HP	CEM	MILK	TEAT	UDDR	FL	MW	MH	SEN	DOC	CLAW	ANGLE	PAP	HS	CW	Marb	RE	Fat	\$M	\$W	\$F	\$G	\$B	\$C
EPD	14	-.4	68	123	0	.32	11.2	7	27	.39	.33	.96	55	-.1	-13	32	.36	.46	-1.61	.56	53	.30	.87	-.007	71	70	106	40	146	260
ACC.	.80	.92	.90	.83	.81	.80	.50	.61	.56	.49	.48	.41	.46	.46	.79	.60	.61	.44	.28	.48	.44	.45	.39							
%RANK	4	20	50	45	90	85	55	60	45	80	90	90	65	85	40	3	10	40	10	60	50	85	25	25	35	40	35	70	55	50

**OWNED BY:**  
 BOTTS ANGUS - HUNTLEY MT  
 M DIAMOND ANGUS, GLENROCK WY  
 SPICKLER RANCH SOUTH - GLENFIELD ND



S Wrangler 830 is a proven calving ease sire with a dominating phenotypic presence and a pedigree stacked with performance and maternal excellence. Wrangler's dam is double bred to Chisum, who consistently sires muscle, mass and power, while enhancing maternal production. Wrangler's pedigree resonates with some of the real maternal heavyweights of the breed as he then traces to EXT and Traveler 6807. When all his maternal strength is combined with the udder and teat quality of Coalition, Wrangler is stamping his own maternal legacy. Wrangler is a very good structured, exceptionally quiet bull, with a poise and presence that further separates him as an elite herd bull. The consistency and quality his progeny exhibit marks him as an elite producing sire.

**AAA 19198304**

**S WRANGLER 830**

**FREEZE BRAND: 830**  
**BORN: 02/25/2018**  
**BIRTH WEIGHT: 66**  
**205 DAY ADJ. WT: 774 (117 RATIO)**  
**365 DAY ADJ. WT: 1356 (113 RATIO)**

**Semen \$25/Cert. \$40**

SON - DIX ANGUS RANCH



DAUGHTER - SPICKLER RANCH SOUTH



DAUGHTER - SPICKLER RANCH SOUTH





271AN0635

LD CAPITALIST 316 #  
**MUSGRAVE 316 COLOSSAL 137**  
 MUSGRAVE LADY BARBARA 545 #

X

BRUNS BLASTER  
**MUSGRAVE MO BARBARA 947**  
 MUSGRAVE MO BARBARA 644-4

# MUSGRAVE JUMBO

TRAIT	CED	BW	WW	YW	YH	SC	HP	CEM	MILK	TEAT	UDDR	FL	MW	MH	SEN	DOC	CLAW	ANGLE	PAP	HS	CW	Marb	RE	Fat	\$M	\$W	\$F	\$G	\$B	\$C
EPD	13	0	78	136	.6	.14	12.7	14	23	.85	.80	1.03	81	.3	-24	32	.52	.46	4.73	.35	66	.68	.53	.056	82	74	119	50	170	302
ACC.	.68	.89	.85	.77	.64	.68	.19	.53	.51	.41	.40	.42	.44	.43	.49	.35	.35	.23	.26	.47	.42	.43	.38							
%RANK	10	25	25	25	40	90	30	10	70	5	4	60	35	60	70	3	65	40	95	25	20	45	65	90	20	30	15	50	30	20

OWNED BY:  
 STYLES ANGUS - BRENTFORD SD  
 MUSGRAVE ANGUS - GRIGGSVILLE IL



Phenotypically dominating - Jumbo consistently sires stout, high performing cattle with a commanding presence and an easy-to-handle attitude. It is uncommon to have a predictable calving-ease sire with the shape, substance and overall power he possesses. And, the maternal value predicted by his cow family is validated through his big bodied, beautiful daughters with exquisite udders. Jumbo has consistently sired sale-topping progeny for Styles Angus and Musgrave Angus and is creating excitement everywhere he has been used. **Jumbo expectations - Jumbo results!**

AAA 19436794

MUSGRAVE JUMBO

TATTOO: 239  
 BORN: 01/12/2019  
 BIRTH WEIGHT: 71  
 205 DAY ADJ. WT: 906 (111 RATIO)  
 365 DAY ADJ. WT: 1400 (112 RATIO)

Semen \$30/Cert. \$40



SON - STYLES ANGUS



DAUGHTER - MUSGRAVE ANGUS



SON - MUSGRAVE ANGUS



AAA 17666102  
LD CAPITALIST 316

FREEZE BRAND: 316  
BORN: 01/26/2013  
BIRTH WEIGHT: 78  
205 DAY ADJ. WT: 759 (ET)  
365 DAY ADJ. WT: 1340 (ET)

Semen \$50 (30 UNIT MAX)  
while supply lasts  
Cert. \$40

OWNED BY:  
MUSGRAVE ANGUS - GRIGGSVILLE IL  
LUDDINGTON CATTLE - FREEDOM OK



LUDDINGTON CATTLE  
FREEDOM, OK



271AN3628

# LD CAPITALIST 316

S A V FINAL ANSWER 0035 #  
CONNEALY CAPITALIST 028 # X LD DIXIE ERICA 2053  
PRIDES PITA OF CONANGA 8821 LD DIXIE ERICA OAR 0853

TRAIT	CED	BW	WW	YW	YH	SC	HP	CEM	MILK	TEAT	UDDR	FL	MW	MH	SEN	DOC	CLAW	ANGLE	PAP	HS	CW	Marb	RE	Fat	\$M	\$W	\$F	\$G	\$B	\$C
EPD	12	-.4	61	106	-.1	.35	8.3	12	23	.66	.63	.99	38	.1	-2	14	.44	.45	.46	.34	50	.70	.64	.051	64	70	108	52	161	273
ACC.	.94	.98	.97	.96	.95	.95	.76	.92	.94	.90	.89	.86	.85	.84	.92	.89	.89	.89	.69	.72	.76	.72	.72	.69						
%RANK	15	20	70	70	95	85	90	15	70	25	25	80	80	75	20	75	30	35	35	25	55	45	55	85	50	40	30	50	40	40

Featured in the inaugural Genetics Guide in 2016, 316 quickly established himself as the all-time sales leader. As his progeny consistently topped contemporary groups and sales around the country, his interest and influence grew worldwide. Once 316 daughters entered production, there was no question that he was a Sire for the Ages! The "316" type has become the standard for the BEEF-360 brand - dense bodied, easy fleshing, structurally sound, eye appealing cattle with true performance and maternal value - built to thrive in all environments and production systems.  
FINAL OPPORTUNITY FOR SEMEN!

SON - MUSGRAVE ANGUS



DAUGHTER - MUSGRAVE ANGUS



49AN372

# MUSGRAVE MOXLEY



Moxley is the Complete Package! Virtually every prominent sire line made famous at Musgrave Angus is stacked in his pedigree, along with many of the best cow families to ever walk their pastures. Phenotypically and genetically balanced - Moxley sires depth and softness, muscle shape and stout sound structure. The Moxley daughters are making exquisite cows!

AAA 19790284

MUSGRAVE MOXLEY

TATTOO: 1580  
BORN: 02/15/2020  
BIRTH WEIGHT: 77  
205 DAY ADJ. WT: 746 (102 RATIO)  
365 DAY ADJ. WT: 1274

Semen \$20/Cert \$40

OWNED BY:  
MUSGRAVE ANGUS - GRIGGSVILLE IL



MUSGRAVE 316 STUNNER  
MUSGRAVE CRACKERJACK X MUSGRAVE JUANA ERICA 888-454  
MUSGRAVE RITO JET A649 MUSGRAVE JUANA ERICA 454-618

TRAIT	CED	BW	WW	YW	YH	SC	HP	CEM	MILK	TEAT	UDDR	FL	MW	MH	SEN	DOC	CLAW	ANGLE	PAP	HS	CW	Marb	RE	Fat	\$M	\$W	\$F	\$G	\$B	\$C
EPD	10	-.8	68	119	.1	.87	10.0	11	32	.81	.58	1.19	55	-.1	-16	12	.29	.39	2.57	.13	55	.61	.72	.033	88	79	103	50	154	288
ACC.	.37	.68	.61	.43	.46	.38	.19	.31	.34	.40	.39	.40	.39	.40	.34	.28	.28	.28	.21	.27	.40	.35	.35	.32						
%RANK	25	15	50	50	85	55	75	25	15	10	35	3	65	85	50	80	2	15	80	5	45	55	40	70	10	20	40	50	45	30



271AN4431

CONNEALY JUDGMENT  
**KG JUSTIFIED 3023 #**  
 KG MISS MAGIC 1443  
 X  
 SITZ REINVESTED 636A  
**GDAR FOREVER LADY 7533**  
 GDAR FOREVER LADY 1138

**GDAR**  
**JUSTIFIED 914**

TRAIT	CED	BW	WW	YW	YH	SC	HP	CEM	MILK	TEAT	UDDR	FL	MW	MH	SEN	DOC	CLAW	ANGLE	PAP	HS	CW	Marb	RE	Fat	\$M	\$W	\$F	\$G	\$B	\$C
EPD	12	-.6	66	127	.2	1.23	14.4	13	24	.58	.42	96	44	.2	-5	28	.17	.39	.75	.47	47	.63	.57	.011	96	73	110	51	161	305
ACC.	.77	.91	.89	.83	.86	.80	.48	.57	.59	.68	.67	.45	.68	.68	.82	.67	.68	.30	.46	.52	.46	.47	.42							
%RANK	15	15	55	40	80	30	10	10	65	45	75	90	75	65	25	15	1	15	45	45	60	50	60	45	5	35	25	50	40	20

OWNED BY:  
 GARTNER-DENOWH ANGUS RANCH - SIDNEY MT  
 ROCK CREEK ANGUS - PARAGOULD AR  
 SPICKLER RANCH NORTH - GLENFIELD ND



GDAR Justified 914 has proven to be the best Justified son available! 914 is stamping his progeny with his same muscle and rib shape, length, tremendous structure and ease of fleshing he exhibits. He is elite for transmitting outstanding foot quality with big, even toe shape and extra heel. 914 sons have dominated past GDAR sales and the daughters are making model, elegant cows with great udders. The cow family behind 914 traces back almost 70 years at Gartner-Denowh - originating with the cow that started the Donna's and Forever Lady's!  
**914 - a tremendously balanced sire that checks all the boxes.**

AAA 19464109

**GDAR JUSTIFIED 914**

FREEZE BRAND: 914  
 BORN: 01/30/2019  
 BIRTH WEIGHT: 70  
 205 DAY ADJ. WT: 731 (112 RATIO)  
 365 DAY ADJ. WT: 1309 (111 RATIO)

Semen \$30/Cert. \$40



DAUGHTER - ROCK CREEK ANGUS



SON - ROCK CREEK ANGUS



DAUGHTER - ROCK CREEK ANGUS





271AN1456

# SHIPWHEEL BEAR PAW

KG JUSTIFIED 3023 #  
**SHIPWHEEL JUSTIFIED 1677**  
 SHIPWHEEL GLORIA 322 #  
 X  
 SHIPWHEEL EISENHOWER 8625  
**SHIPWHEEL BLACK PRIDE 047**  
 SHIPWHEEL BLACK PRIDE 8117

TRAIT	CED	BW	WW	YW	YH	SC	HP	CEM	MILK	TEAT	UDDR	FL	MW	MH	SEN	DOC	CLAW	ANGLE	PAP	HS	CW	Marb	RE	Fat	\$M	\$W	\$F	\$G	\$B	\$C
EPD	7	-.6	66	122	.3	1.14	11.6	0	29	.32	.40	1.09	71	.3	-22	29	.44	.51	.77	.49	62	1.03	.79	.038	59	69	108	71	180	292
ACC.	.31	.54	.46	.41	.43	.35	.16	.25	.30	.28	.27	.33	.36	.39		.31	.23	.23	.24	.26	.37	.33	.31	.30						
%RANK	45	15	60	50	75	35	55	95	30	90	85	40	50	65	65	10	35	70	45	50	35	25	40	70	70	45	25	25	25	30

OWNED BY:  
 CURRY CATTLE CO - VALIER MT  
 FREDERICKSON RANCH - SPEARFISH SD  
 POLK CATTLE CO - RAYNESFORD MT  
 SHIPWHEEL CATTLE CO - CHINOOK MT

Raised in the Bear Paw Mountains of Northern Montana and stout as a grizzly - introducing Shipwheel Bear Paw! As a highlight of the record-setting Shipwheel Cattle Company sale, Bear Paw was admired for his length of body, structural integrity and quiet nature. When it comes to pure muscle, he will be a game changer - exhibiting the density and mass of the old Rito cattle. When you combine this extraordinary shape with calving ease figures and high marbling, Bear Paw becomes elite. His fancy, young dam is doing a great job and is backed by generations of attractive, easy fleshing cows. Bear Paw brings the opportunity to move the needle on marbling without compromising maternal quality, structure and shape.

AAA 21285174

SHIPWHEEL BEAR PAW 4606

TATTOO: 4606  
 BORN: 05/20/2024  
 BIRTH WEIGHT: 85  
 205 DAY ADJ. WT: 716 (104 RATIO)  
 365 DAY ADJ. WT: (106 RATIO)

Semen \$30/Cert. \$40





AAA 19343216

MILLARS DUKE 816

FREEZE BRAND: 816  
 BORN: 01/31/2018  
 BIRTH WEIGHT: 84  
 205 DAY ADJ. WT: 813 (119 RATIO)  
 365 DAY ADJ. WT: 1330 (ET)

Semen \$30 (LIMITED)  
 Cert. \$40

OWNED BY:  
 MOORE ANGUS - ARTESIAN SD  
 MILLAR ANGUS - STURGIS SD  
 SCHAFF ANGUS VALLEY - ST ANTHONY ND

**MOORE ANGUS**  
 ARTESIAN SOUTH DAKOTA

**MILLAR**  
 Angus

Schaff Angus Valley

B BAR WINDY 79  
**B BAR WINDY 7 3575** X **MILLARS QUEEN LASS 5273 #**  
 B BAR EULIMA 357 MILLARS QUEN LASS 3276

# MILLARS DUKE

316AN0261

TRAIT	CED	BW	WW	YW	YH	SC	HP	CEM	MILK	TEAT	UDDR	FL	MW	MH	SEN	DOC	CLAW	ANGLE	PAP	HS	CW	Marb	RE	Fat	\$M	\$W	\$F	\$G	\$B	\$C
EPD	5	-.7	81	130	.3	1.22	11.0	-.1	31	.67	.63	.90	74	.5	-.25	20	.41	.52	1.93	.37	51	.18	.31	.052	59	92	99	23	122	217
ACC.	.85	-.94	.93	.88	.83	.85	-.38	-.56	.65	-.46	-.44	-.39	-.43	-.42	.81	-.71	.71	-.26	-.31	-.47	-.43	-.44	-.37	.85	60	5	45	95	80	80
%RANK	60	15	20	35	70	30	60	95	20	25	25	95	40	40	70	45	20	75	70	30	55	90	85	85	60	5	45	95	80	80

Duke's calves come easy with great vigor, and smash the scales at weaning time. Progeny are tremendously long-spined and long-hipped with incredibly quiet, inquisitive demeanors. Duke's offspring have been some of the most sought after around the country. His daughters exhibit true maternal characteristics: calm dispositions, great mothering ability with excellent udder design and highly productive. SEMEN IS LIMITED.

SON - DIX ANGUS RANCH



SON - SCHAFF ANGUS VALLEY



AAA 19148655

CIRCLE L LANDMARK

TATTOO: 741F  
 BORN: 01/28/2018  
 BIRTH WEIGHT: 76  
 205 DAY ADJ. WT: 816 (115 RATIO)  
 365 DAY ADJ. WT: 1442 (12)

Semen \$20/Cert \$40

Landmark sires deep bodied cattle with great width, mass, and striking profiles. His maternal value is being revealed in his daughters. Wedge shaped, elegant designed, powerful females are to be expected Landmark. Outcross pedigree, great production proof, and one of our best bulls for PAP!



OWNED BY:  
 CIRCLE L ANGUS - DILLON MT  
 MUSGRAVE ANGUS - GRIGGSVILLE IL



S CHISUM 6175 #  
**CIRCLE L GUS**  
 CIRCLE L PRIDE X097

S A V ANGUS VALLEY 1867 #  
 X **CIRCLE L QUEEN 307B**  
 CIRCLE L QUEEN 158Z

237AN3663

# CIRCLE L LANDMARK

TRAIT	CED	BW	WW	YW	YH	SC	HP	CEM	MILK	TEAT	UDDR	FL	MW	MH	SEN	DOC	CLAW	ANGLE	PAP	HS	CW	Marb	RE	Fat	\$M	\$W	\$F	\$G	\$B	\$C	
EPD	3	1.8	66	122	.3	.82	15.1	14	18	.36	.40	1.01	14	.1	+13	25	.48	.48	-1.31	.52	55	.45	.20	.100	96	69	112	31	144	283	
ACC.	.63	.87	.84	.78	.78	.76	-.32	-.56	.66	-.60	-.58	-.50	-.62	-.70	.67	-.67	.53	.53	.45	.31	.49	.43	.45	.40	95	5	40	25	85	60	35
%RANK	75	65	55	45	70	55	10	10	90	85	80	70	95	75	10	25	50	50	10	55	45	70	95	95	5	40	25	85	60	35	



271AN0712

# MILLARS HONDO

B BAR WINDY 7 3575  
**MILLARS DUKE 816**  
 MILLARS QUEEN LASS 5273 #

X

S A V RENOWN 3439 #  
**MILLARS GOLDIE 9284 #**  
 MILLARS GOLDIE 0284

BS

TRAIT	CED	BW	WW	YW	YH	SC	HP	CEM	MILK	TEAT	UDDR	FL	MW	MH	\$EN	DOC	CLAW	ANGLE	PAP	HS	CW	Marb	RE	Fat	\$M	\$W	\$F	\$G	\$B	\$C
EPD	4	2.4	92	154	.7	1.09	12.1	0	35	.72	.61	1.14	87	.7	-34	27	.43	.47	1.67	.31	60	.18	.62	.027	88	102	95	28	124	249
ACC.	.40	.81	.77	.44	.50	.39	.20	.30	.34	.31	.30	.32	.37	.40		.36	.29	.29	.24	.27	.40	.36	.35	.32						
%RANK	70	75	4	10	30	40	40	95	10	20	30	15	25	25	85	15	30	45	65	20	30	90	55	60	10	1	55	90	80	60

**OWNED BY:**

MILLAR ANGUS · STURGIS SD  
 SHIPWHEEL CATTLE CO · CHINOOK MT  
 WHISTLING WINDS ANGUS · HINGHAM MT

Hondo is one of the “Duke’s” greatest creations! As the top seller at the 2024 Millar Angus Sale, Hondo ties their two most prominent and proven cow families together. With pathfinders stacked in - top and bottom - the maternal predictability is assured. Hondo is long bodied, level topped, sound structured and tremendously neat fronted. Hondo offers mating flexibility and sires stout sons that are complete in their design and daughters that will make feminine, highly productive cows. Hondo’s calves arrive with great vigor, are long bodied and coal black! They have been performance standouts at weaning time and will highlight sales over the next year.

**AAA 20845840**

**MILLARS HONDO 349**

TATTOO: 349  
 BORN: 01/15/2023  
 BIRTH WEIGHT: 80  
 205 DAY ADJ. WT: 763 (114 RATIO)  
 365 DAY ADJ. WT: 1265 (115 RATIO)

**Semen \$30/Cert. \$40**



HONDO SON - MILLAR ANGUS



HONDO SON - MILLAR ANGUS





AAA #20515570

KOUPALS B&B BRIDGER 2041

TATTOO: 2041  
 BORN: 01/06/2022  
 BIRTH WEIGHT: 74  
 205 DAY ADJ. WT: 777 (ET)  
 365 DAY ADJ. WT: 1259 (ET)

Semen \$25/Cert. \$40

OWNED BY:  
 ARNTZEN ANGUS RANCH - HILGER MT  
 KOUPALS B&B ANGUS - DANTE SD



S A V RAINFALL 6846 #  
**SQUARE B ATLANTIS 8060** × **B&B BLKBD PROGRESS 3015 #**  
 ELBANNA OF CONANGA 1209 B&B BLKBD PROGRESS 0049 #

# KOUPALS B&B BRIDGER

271AN530

TRAIT	CED	BW	WW	YW	YH	SC	HP	CEM	MILK	TEAT	UDDR	FL	MW	MH	SEN	DOC	CLAW	ANGLE	PAP	HS	CW	Marb	RE	Fat	\$M	\$W	\$F	\$G	\$B	\$C
EPD	9	-1.3	54	99	-.2	1.63	13.1	13	32	.49	.46	1.09	16	-.5	+4	6	.30	.45	1.23	.32	38	.47	.64	.076	86	62	86	39	128	255
ACC.	.60	.83	.79	.64	.71	.68	.32	.35	.37	.38	.37	.43	.44	.46		.65	.52	.53	.27	.33	.47	.39	.39	.35						
%RANK	30	10	85	85	95	10	25	10	15	60	70	30	95	95	15	95	3	35	55	20	80	65	55	95	15	55	70	75	75	60

Bridger has proven his ability to sire high quality elite offspring with striking profiles, structural integrity, real performance and athleticism. His progeny highlighted Arntzen Angus Ranch Sale - including the record selling top lot. A maternal masterpiece - Bridger stacks some of the best cows to ever walk in his 3-generation pedigree: SAV Blackcap May 4136, Elbanna of Conanga 1209, B&B Blkbd Progress 3015 & B&B Erica 605 - descending directly from 5 consecutive generations of Pathfinder females! Bridger progeny come easy and are destined for maternal greatness!

SON - KOUPAL MIDWEST ANGUS



DAM - B&B BLKBD PROGRESS 3015 #



AAA 18241949

J D PAY DIRT 546

FREEZE BRAND: 546  
 BORN: 01/29/2015  
 BIRTH WEIGHT: 81  
 205 DAY ADJ. WT: 725 (110 RATIO)  
 365 DAY ADJ. WT: 1296 (109 RATIO)

Semen \$20/Cert \$40

Pay Dirt progeny come easy, grow fast, and both bulls and heifers are prized for their balance and usefulness. Slick haired, good uddered, fertile daughters are high indexing wherever they reside. If you are in need of a proven sire to give you calving ease and leave a set of exceptional cows, strike it rich with Pay Dirt!

OWNED BY: MEAD FARMS - BARNETT MO  
 DAIGGER/ORR - NORTH PLATTE NE  
 SENSENICH FARMS - BROOKFIELD MO



BASIN PAYWEIGHT 006S #  
**BASIN PAYWEIGHT 1682 #** × **J D PRIDE LASSIE 3715**  
 21AR O LASS 7017 J D PRIDE LASSIE 1715

# JD PAY DIRT

271AN3814

TRAIT	CED	BW	WW	YW	YH	SC	HP	CEM	MILK	TEAT	UDDR	FL	MW	MH	SEN	DOC	CLAW	ANGLE	PAP	HS	CW	Marb	RE	Fat	\$M	\$W	\$F	\$G	\$B	\$C
EPD	10	.6	67	111	.3	.74	11.9	11	25	.43	.42	.94	46	0	-7	26	.56	.48	-1.19	.78	38	.92	.34	.030	68	68	84	61	145	256
ACC.	.62	.85	.84	.79	.77	.78	.34	.63	.67	.50	.48	.52	.47	.48		.65	.33	.32	.33	.34	.53	.47	.49	.44						
%RANK	25	35	50	65	70	60	45	25	55	75	75	95	75	80	30	20	80	50	10	90	80	25	85	65	40	45	75	35	55	55



271AN4798

# 0026 IDEAL RITO OF REN

RITO 707 OF IDEAL 3407 7075  
**S A V RENOWN 3439 #**  
 S A V BLACKCAP MAY 4136  
 X  
 COLEMAN EMBLAZON 0116  
**IDEAL 7005 OF 0116 ERILOU**  
 IDEAL 5724 OF 9524 ERILOU

TRAIT	CED	BW	WW	YW	YH	SC	HP	CEM	MILK	TEAT	UDDR	FL	MW	MH	SEN	DOC	CLAW	ANGLE	PAP	HS	CW	Marb	RE	Fat	\$M	\$W	\$F	\$G	\$B	\$C
EPD	7	-.9	59	114	-.2	.89	13.1	-2	28	.81	.74	1.14	57	0	-14	25	.41	.47	2.86	.42	44	.18	.51	.098	75	59	85	22	107	214
ACC.	.45	.74	.68	.58	.49	.45	.21	.30	.36	.32	.31	.42	.41	.43		.34	.30	.31	.27	.29	.44	.38	.38	.35						
%RANK	45	15	70	60	95	50	25	95	35	10	10	15	60	80	45	25	20	45	85	35	70	90	70	95	25	60	70	95	90	80

**OWNED BY:**  
 JORGENSEN RANCHES - IDEAL SD  
 SHIPWHEEL CATTLE CO - CHINOOK MT

0026 has earned his stripes as a proven mature Herdsire. He is moderate framed, thick made and easy fleshing with excellent feet. He has been bred to hundreds of heifers with great success over the years. 0026 daughters look to be his legacy. They are outstanding with tremendous udder quality and the ideal maternal design. Tremendously long bodied, 0026 will stretch out cattle while maintaining muscle shape and ease of flesh. Turn to 0026 for calving ease, structural integrity and predictable maternal value.

**AAA 19888476**

**IDEAL 0026 RITO OF REN**

**FREEZE BRAND: 0026**  
**BORN: 02/09/2020**  
**BIRTH WEIGHT: 83**  
**205 DAY ADJ. WT: 694 (110 RATIO)**  
**365 DAY ADJ. WT: 1129 (106 RATIO)**

**Semen \$25/Cert. \$40**



0026 AT BEAUTIFUL LLOYD, MONTANA



AAA 20004765

PARTISOVER DEEP ROOTS 126

TATTOO: 126  
 BORN: 08/25/2020  
 BIRTH WEIGHT: 78  
 205 DAY ADJ. WT: 563 (ET)  
 365 DAY ADJ. WT: 1043 (ET)

Semen \$30/Cert. \$40

OWNED BY:  
 ELROD & TOLBERT - TALMO GA  
 PREDESTINED CATTLE CO - WADLEY GA  
 PARTISOVER RANCH - COLBERT GA



PARTISOVER

# DEEP ROOTS

AN978

CONNEALY CONFIDENCE 0100# S A V RESOURCE 1441#  
 CONNEALY CONFIDENCE PLUS# X PARTISOVER BURGESS 744  
 ELBANNA OF CONANGA 1209 PARTISOVER BURGESS 133

TRAIT	CED	BW	WW	YW	YH	SC	HP	CEM	MILK	TEAT	UDDR	FL	MW	MH	SEN	DOC	CLAW	ANGLE	PAP	HS	CW	Marb	RE	Fat	\$M	\$W	\$F	\$G	\$B	\$C
EPD	6	1.7	75	136	.1	.45	8.9	9	27	.80	.59	1.03	40	-.3	-.5	22	.40	.36	2.45	.51	55	.84	.87	.073	89	78	109	60	170	309
ACC.	.51	.81	.74	.61	.69	.54	.30	.37	.37	.39	.38	.43	.45	.46		.51	.50	.53	.31	.55	.49	.45	.45	.42						

The Deep Roots calves are absolute standouts - with the shape, structure and knockout good looks of their extraordinary sire. They are consistently deep bodied and easy fleshing with outstanding foot quality and balance. Stemming from the powerful and predictable Burgess cow family - his dam, 744, was picture perfect from every angle and the matriarch of the new generations of Burgess cattle. His genetic "roots" run deep.

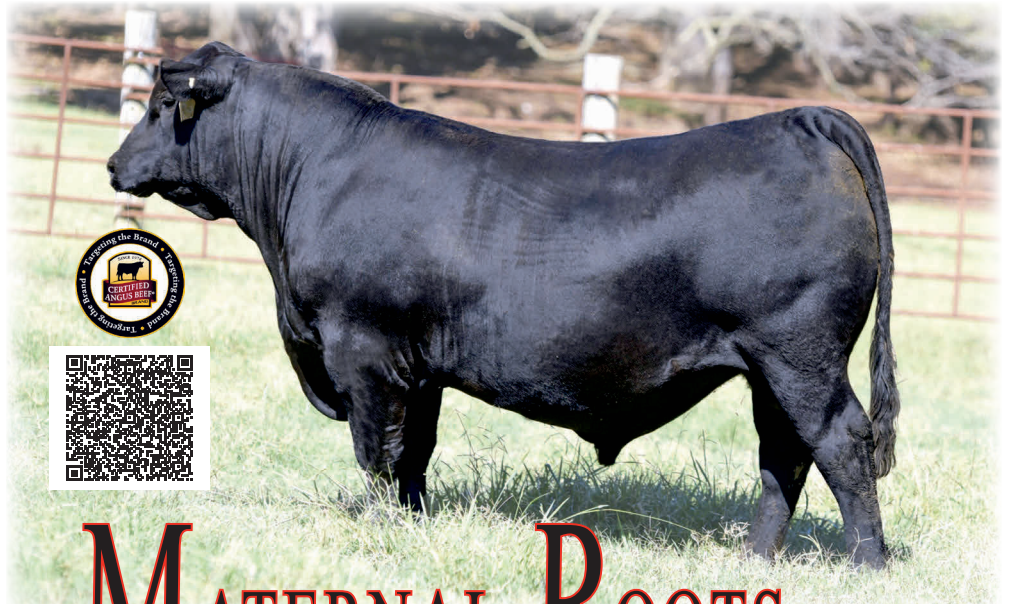
AAA 20977741

E/T MATERNAL ROOTS 318

TATTOO: 318  
 BORN: 08/16/2023  
 BIRTH WEIGHT: 70  
 205 DAY ADJ. WT: (ET)  
 365 DAY ADJ. WT: (ET)

Semen \$30/Cert. \$40

OWNED BY:  
 ELROD & TOLBERT - TALMO GA  
 M DIAMOND ANGUS - GLENROCK WY



# E/T MATERNAL ROOTS

271AN1048

CONNEALY CONFIDENCE PLUS# KG JUSTIFIED 3023#  
 PARTISOVER DEEP ROOTS 126 X E/T BURGESS 028  
 PARTISOVER BURGESS 744 GRETSCH BURGESS 1002#

TRAIT	CED	BW	WW	YW	YH	SC	HP	CEM	MILK	TEAT	UDDR	FL	MW	MH	SEN	DOC	CLAW	ANGLE	PAP	HS	CW	Marb	RE	Fat	\$M	\$W	\$F	\$G	\$B	\$C
EPD	5	.6	73	136	.3	.64	10.3	12	29	.43	.36	1.06	35	-.1	-.4	27	.33	.27	.98	.50	70	.87	.80	.077	98	81	121	61	182	334
ACC.	.32	.50	.42	.36	.44	.37	.20	.27	.29	.30	.29	.37	.35	.38		.34	.27	.28	.25	.34	.36	.35	.33	.31						
%RANK	60	35	40	25	75	70	75	15	30	75	90	55	90	90	20	15	5	1	50	55	20	40	40	95	4	20	10	40	25	10

Maternal Roots was the phenotypic standout and sale topper at the 2024 Cowboy Logic sale and also excelled in all relevant numeric traits. When a sire surfaces with the predictable maternal excellence validated on all sides of his pedigree AND data relevant for all segments of the industry, the stars are lined up! *Track his pedigree - the "Maternal Roots" run deep!*



271AN1466

# PGC NORTHERN LIGHTS

S A V RAINFALL 6846 #  
**SQUARE B TRUE NORTH 8052**  
 ELBANNA OF CONANGA 1209  
 X  
 SITZ STELLAR 726D #  
**PGC GUIDING LADY 0015**  
 PGC GUIDING LADY 8139

TRAIT	CED	BW	WW	YW	YH	SC	HP	CEM	MILK	TEAT	UDDR	FL	MW	MH	SEN	DOC	CLAW	ANGLE	PAP	HS	CW	Marb	RE	Fat	\$M	\$W	\$F	\$G	\$B	\$C
EPD	4	1.1	82	144	.6	.81	11.3	4	27	.80	.65	1.05	64	.4	-17	18	.44	.46	-.64	.09	57	1.07	.57	.046	82	87	99	70	169	301
ACC.	.39	.61	.53	.42	.47	.47	.23	.30	.33	.36	.35	.41	.39	.41		.35	.30	.30	.34	.31	.39	.35	.34	.32						
%RANK	70	50	15	15	40	55	55	85	45	10	20	50	55	50	50	55	30	40	15	3	40	20	60	80	20	10	45	20	30	20

**OWNED BY:**

CIRCLE L ANGUS · DILLON MT  
 DOUBLE RL CATTLE COMPANY LLC · RIDGWAY CO  
 PETERSON GRAIN & CATTLE · HAVRE MT



**DOUBLE RL CATTLE COMPANY**  
 RIDGWAY CO



An exciting new addition to the BEEF-360 lineup is PGC Northern Lights. He offers added performance and carcass merit while maintaining the maternal predictability we demand. Northern Light's dam, PGC Guiding Lady 0015 is an easy fleshing, dependable young cow in the Peterson Grain & Cattle herd - feminine, extremely maternal & easy tempered with a super level udder, she maintains flesh in their tough environment. The first progeny of Northern Lights at Circle L Angus confirm his ability to transmit performance and style into his progeny with balanced EPD values and superior PAP.

**AAA 20806984**

**PGC NORTHERN LIGHTS**

TATTOO: 3012  
 BORN: 02/03/2023  
 BIRTH WEIGHT: 74  
 205 DAY ADJ. WT: 665 (102 RATIO)  
 365 DAY ADJ. WT: 1064 (102 RATIO)

**Semen \$30/Cert. \$40**

SON - CIRCLE L ANGUS



DAUGHTER - CIRCLE L ANGUS



SON - CIRCLE L ANGUS





Padre combines a powerful look with calving ease, performance, and balanced carcass projections! Padre stems from an elite cow family at Tehama Angus Ranch - being out of a powerful, beautiful, productive donor dam. His calves exhibit great calving ease, exceptional vigor, and a look of quality.

AAA 19751663

TEHAMA PADRE H690

TATTOO: H690  
 BORN: 08/12/2019  
 BIRTH WEIGHT: 80  
 205 DAY ADJ. WT: 698 (109 RATIO)  
 365 DAY ADJ. WT: 1202 (106 RATIO)

Semen \$25/Cert \$40

OWNED BY:  
 BARTELS ANGUS, RIVERTON NE  
 TEHAMA ANGUS RANCH, GERBER CA

**BARTELS**  
 ANGUS



106AN4929

# TEHAMA PADRE

S S NIAGARA Z29  
 TEHAMA PATRIARCH F028 X TEHAMA ELITE BLACKBIRD C455  
TEHAMA ELITE BLACKBIRD D826 X TEHAMA ELITE BLACKBIRD X310 #

TRAIT	CED	BW	WW	YW	YH	SC	HP	CEM	MILK	TEAT	UDDR	FL	MW	MH	SEN	DOC	CLAW	ANGLE	PAP	HS	CW	Marb	RE	Fat	\$M	\$W	\$F	\$G	\$B	\$C
EPD	7	1.8	83	136	.4	.74	9.8	11	29	.59	.26	1.06	50	.1	-11	14	.47	.48	.58	.32	40	.84	.77	.015	81	93	75	64	139	261
ACC.	.41	.75	.70	.51	.59	.51	.29	.35	.37	.36	.35	.42	.44	.47	.40	.36	.36	.36	.30	.31	.46	.40	.40	.37						
%RANK	45	65	15	25	60	60	75	25	30	40	95	45	70	75	40	75	45	50	40	20	75	30	35	45	20	4	85	30	65	50

AAA 18248948

WOODHILL COMPLETE A130 C-2

TATTOO: C2  
 BORN: 02/02/2015  
 BIRTH WEIGHT: 74  
 205 DAY ADJ. WT: 768 (111 RATIO)  
 365 DAY ADJ. WT: 1320 (109 RATIO)

Semen \$25/Cert. \$40

OWNED BY:  
 R. A. BROWN RANCH, THROCKMORTON TX  
 WAGONHAMMER RANCH, ALBION NE  
 WOODHILL FARMS INC, VIROQUA WI

**WAGONHAMMER**  
 Ranches



**WOODHILL FARMS**  
 VIROQUA, WISCONSIN



316AN0049

BASIN FRANCHISE P142 #  
 EF COMPLEMENT 8088 # X WOODHILL EVERGREEN U181-A130 #  
EF EVERELDA ENTENSE 6117 WOODHILL EVERGREEN R53-U181

# WOODHILL COMPLETE

TRAIT	CED	BW	WW	YW	YH	SC	HP	CEM	MILK	TEAT	UDDR	FL	MW	MH	SEN	DOC	CLAW	ANGLE	PAP	HS	CW	Marb	RE	Fat	\$M	\$W	\$F	\$G	\$B	\$C
EPD	11	.1	79	124	.1	1.15	13.3	11	27	.51	.47	1.08	64	.4	-17	20	.38	.46	.89	.22	71	.83	.57	.070	89	96	123	56	180	322
ACC.	.76	.91	.85	.85	.88	.84	.59	.73	.72	.75	.73	.57	.70	.75	.83	.71	.72	.72	.34	.58	.59	.54	.55	.51						
%RANK	20	25	20	45	85	35	25	25	45	60	65	35	55	50	50	45	15	40	45	10	15	35	60	95	10	3	10	40	20	15

The total package - Complete blends calving ease, growth, good looks, structure, maternal, and carcass excellence - all backed up by progeny proof across many herds. He can be mated to so many different bloodlines today and has become a "go-to" sire for many. Backed by his elite Pathfinder dam, Complete daughters are known for their moderate size, fleshing ability, udder quality, and great production. Turn to Complete to sire good built, common sense type of cattle that will work in any environment. The phenotypic quality he transmits is exceptional, and his numerical figures put every multi-trait index at the top end of the breed.

SON - WAGONHAMMER RANCHES



DAUGHTER - WAGONHAMMER RANCHES





49AN3915

**DLB**  
**LANDMAN**

CONNEALY CAPITALIST 028 #  
**LD CAPITALIST 316 #**

LD DIXIE ERICA 2053

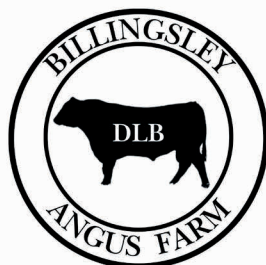
X

SITZ ALLIANCE 6595 #  
**DLB MISS ALLIANCE 6595 838 #**

DLB MISS LEAD ON 618 #

TRAIT	CED	BW	WW	YW	YH	SC	HP	CEM	MILK	TEAT	UDDR	FL	MW	MH	\$EN	DOC	CLAW	ANGLE	PAP	HS	CW	Marb	RE	Fat	\$M	\$W	\$F	\$G	\$B	\$C
EPD	14	-.7	63	113	8	1.38	13.3	12	28	.53	.48	1.16	38	.4	-5	21	.35	.48	-.43	.47	57	.70	.78	.064	95	69	106	53	160	303
ACC.	.41	.63	.56	.52	.62	.54	.25	.34	.36	.35	.34	.43	.43	.45		.39	.31	.31	.32	.33	.45	.40	.40	.38						
%RANK	4	15	65	60	20	20	25	15	35	55	65	10	80	50	25	40	10	50	20	45	40	45	35	95	5	45	35	45	40	20

OWNED BY:  
BILLINGSLEY ANGUS FARM - KEITHVILLE LA



Landman is a who's who of maternal proof! Stacking a tremendous family of proven, highly productive cows - anchored by 2 direct Pathfinders - with the consistency of 316 has created a predictable sire to cover all the bases. A solid 6 frame - Landman will add length and scale without sacrificing shape or body depth. He is deep healed and big footed - striding out with ease. Landman is incredibly quiet and easy to be around. Use Landman to make calves that come easy and grow. The balance of maternal fundamentals with performance and end-product merit make him a truly versatile sire. Landman calves come easy and vigorous, are long-bodied and true standouts.

*Count on Landman to do your dirty work!*

**AAA 20732131**

**DLB LANDMAN 2223**

TATTOO: 2223  
BORN: 11/06/2022  
BIRTH WEIGHT: 74  
205 DAY ADJ. WT: 651 (102 RATIO)  
365 DAY ADJ. WT: 1104 (106 RATIO)

**Semen \$25/Cert. \$40**

SON - BILLINGSLEY ANGUS FARM



DAUGHTER - BILLINGSLEY ANGUS FARM



DAUGHTER - BILLINGSLEY ANGUS FARM





BS



271AN0234

COLEMAN CHARLO 0256 #  
**COLEMAN BRAVO 6313**  
 COLEMAN DONNA 714

X

SHIPWHEEL IDEAL 4223 7571  
**SHIPWHEEL BLS RACHEL 966**  
 SHIPWHEEL BLS RACHEL 725

# SHIPWHEEL BLS BRAVADO

TRAIT	CED	BW	WW	YW	YH	SC	HP	CEM	MILK	TEAT	UDDR	FL	MW	MH	\$EN	DOC	CLAW	ANGLE	PAP	HS	CW	Marb	RE	Fat	\$M	\$W	\$F	\$G	\$B	\$C
EPD	16	-1.2	62	112	.2	1.48	14.1	10	24	.84	.72	1.12	10	-.2	+12	18	.32	.37	.73	.50	50	.52	.41	.033	116	67	95	42	138	295
ACC.	.36	.67	.61	.53	.46	.36	.20	.28	.32	.31	.30	.38	.40	.40		.32	.26	.26	.25	.28	.40	.32	.31	.28						
%RANK	2	10	65	65	80	15	15	35	65	5	10	20	95	90	10	55	4	10	40	50	55	60	80	70	1	45	55	65	65	25

**OWNED BY:**  
 BUDGER ENTERPRISE - HELENA MT  
 SHIPWHEEL CATTLE CO - CHINOOK MT  
 BREE SWANSON

**BUDGER ENTERPRISES**  
 SCOTT KNUTSON  
 HELENA, MONTANA



Bravado is an outcross calving-ease sire with tremendous feet and an outstanding disposition! He has been used successfully in large ranch heifer breeding projects with great results at preg-check and calving. Bravado is backed by proven maternal heritage. He descends from three consecutive donor cows that have stood the test of time and are still producing in the tough Northern Montana environment of Shipwheel Cattle Company. The cows behind Bravado exhibit exceptional maternal instinct, udder quality, feet, fertility and do-ability. Bravado brings the fundamentals of functionality to the table - Top 1% \$M with elite Claw, Angle, Scrotal and HP. Bravado is a positive \$EN Sire that is making outstanding replacements.

**AAA 20364988**

SHIPWHEEL BLS BRAVADO 1536

TATTOO: 1536  
 BORN: 03/16/2021  
 BIRTH WEIGHT: 63  
 205 DAY ADJ. WT: 707 (109 RATIO)  
 365 DAY ADJ. WT: (105 RATIO)

Semen \$25/Cert. \$40

DAM - SHIPWHEEL BLS RACHEL 966



GRANDDAM - SHIPWHEEL BLS RACHEL 725





271AN1043

# VDAR CONFLUENCE

HF SYNDICATE 213Z  
**U-2 COALITION 206C #**  
 U2 ERELITE 109Z  
 X  
 VDAR SHOWDOWN 7236  
**VDAR POLLY 9260**  
 V D A R POLLY 9697

TRAIT	CED	BW	WW	YW	YH	SC	HP	CEM	MILK	TEAT	UDDR	FL	MW	MH	SEN	DOC	CLAW	ANGLE	PAP	HS	CW	Marb	RE	Fat	\$M	\$W	\$F	\$G	\$B	\$C
EPD	12	.6	66	122	.3	1.00	12.2	6	34	.48	.49	1.07	54	0	-16	25	.34	.50	.64	.28	54	.44	.26	.053	78	75	97	35	132	249
ACC.	.37	.59	.47	.43	.44	.39	.21	.32	.34	.33	.32	.36	.38	.40		.34	.27	.27	.25	.27	.36	.33	.31	.29						
%RANK	15	35	55	45	70	45	40	70	10	65	60	40	65	80	50	25	10	65	40	15	45	70	90	85	25	30	50	80	70	60

**OWNED BY:**

HIDEAWAY CATTLE COMPANY, STEVENSVILLE MT  
 VAN DYKE ANGUS RANCH, MANHATTAN MT



**Confluence - where power, performance and true maternal value come together!** Bred near the headwaters of the Missouri River - VDAR Confluence brings together the unwavering maternal focus of the Van Dyke program with the shape, structure and true performance of Coalition. Deep, thick, structurally complete and puppy dog gentle - Confluence offers an outcross pedigree creating the mating flexibility needed today. His dam - VDAR Polly 9260 is one of the most impressive and highly coveted cows currently working at Van Dyke Angus. Add in the power and maternal excellence of Erelite 109Z through Coalition - there is no doubt Confluence will sire cattle that grow and are built to last!

**AAA 20672987**

**VDAR CONFLUENCE 4273**

**FREEZE BRAND: 4273**  
**BORN: 01/21/2023**  
**BIRTH WEIGHT: 84**  
**205 DAY ADJ. WT: 667 (98 RATIO)**  
**365 DAY ADJ. WT: 1198 (103 RATIO)**

**Semen \$30/Cert. \$40**



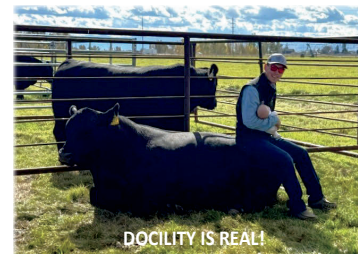
CONFLUENCE WITH HIS DAM - VAN DYKE



GRANDDAM - VDAR POLLY 9697



MAC SPICKARD AND BABY LINDEE



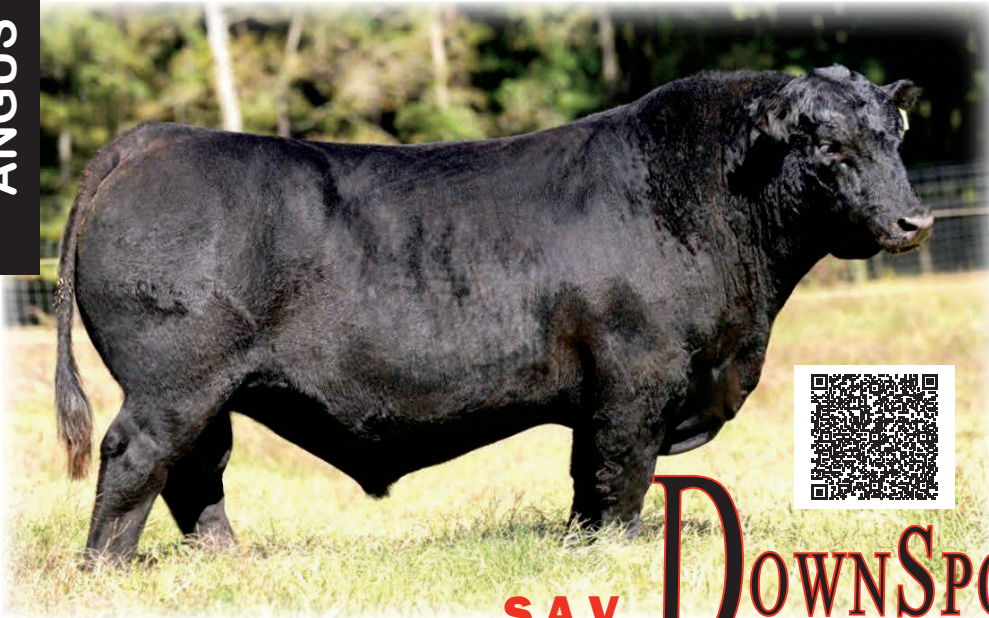
DOCILITY IS REAL!

AAA 20159750


S A V DOWNSPOUT 1878

TATTOO: 1878  
 BORN: 01/17/2021  
 BIRTH WEIGHT: 74  
 205 DAY ADJ. WT: 958  
 365 DAY ADJ. WT: 1441

Semen \$25/Cert. \$40



**OWNED BY:**  
 CASEY GREEN CATTLE - BISHOP GA  
 SCHAFF ANGUS VALLEY - ST ANTHONY ND



# SAV DOWNSPOUT

48AN1714

COLEMAN CHARLO 0256#  
**S A V RAINFALL 6846#** X **S A V MADAME PRIDE 4407#**  
 S A V BLACKCAP MAY 4136 S A V MADAME PRIDE 0235

TRAIT	CED	BW	WW	YW	YH	SC	HP	CEM	MILK	TEAT	UDDR	FL	MW	MH	SEN	DOC	CLAW	ANGLE	PAP	HS	CW	Marb	RE	Fat	\$M	\$W	\$F	\$G	\$B	\$C
EPD	3	1.9	55	103	0	1.51	9.0	5	20	.79	.62	1.09	36	-.2	+1	16	.34	.45	.08	.26	30	.61	.45	-.009	68	43	78	50	129	235
ACC.	.41	.68	.59	.48	.47	.51	.25	.34	.36	.35	.34	.44	.40	.42		.39	.33	.33	.29	.31	.42	.39	.39	.36						
%RANK	75	65	80	75	90	15	85	75	85	10	30	30	85	90	20	5	10	35	30	15	90	55	75	25	40	85	80	50	75	70

Downspout offers a pristine pedigree, outstanding phenotype and structure, performance and cow power beyond compare. Downspout brings thickness, capacity, muscle and a beef bull look. Downspout's magnificent Pathfinder dam walks with the best in the breed for phenotype, production and maternal power. The offspring of Downspout are exciting - sons are deep bodied and heavy muscled with a commanding presence and daughters are model, wedge-shaped maternal designs.

AAA 20133744

PYRAMID BLACK HILLS 1032

TATTOO: 1032  
 BORN: 02/12/2021  
 BIRTH WEIGHT: 78  
 205 DAY ADJ. WT: 919 (ET)  
 365 DAY ADJ. WT:

Semen \$25/Cert. \$40



**OWNED BY:**  
 FREDERICKSON RANCH - SPEARFISH SD



# PYRAMID BLACK HILLS

272AN1905

S A V PRESIDENT 6847#  
**S A V AMERICA 8018** X **GLACIAL 1441 BLACKBIRD 61C**  
 S A V MADAME PRIDE 0075 GLACIAL 9012 BLACKBIRD 70Z

TRAIT	CED	BW	WW	YW	YH	SC	HP	CEM	MILK	TEAT	UDDR	FL	MW	MH	SEN	DOC	CLAW	ANGLE	PAP	HS	CW	Marb	RE	Fat	\$M	\$W	\$F	\$G	\$B	\$C
EPD	13	1.4	70	126	0	.80	10.2	4	28	.61	.44	1.06	56	-.3	-14	21	.42	.39	2.38	.91	48	.71	.83	.014	72	72	82	58	141	255
ACC.	.36	.68	.61	.54	.47	.54	.23	.36	.36	.40	.38	.40	.40	.40		.36	.27	.27	.26	.28	.41	.34	.34	.31						
%RANK	10	55	45	40	90	60	70	85	35	35	75	45	65	95	45	40	25	15	80	95	60	45	30	45	35	35	75	40	60	55

Black Hills brings a unique twist to a proven, maternal pedigree. He is deep and soft with great foot structure and ideal locomotion. He stacks some of the most proven cow families in the industry in his pedigree with amazing balance in all relevant traits. Black Hills offers tremendous performance spread with more carcass value than most similar pedigrees. His progeny exhibit true performance in a sound, balanced, eye appealing package.



*Pam Vanek*

271AN4321

# SHIPWHEEL DREAMER

RITO 707 OF IDEAL 3407 7075  
**SA V RENOWN 3439 #**  
SA V BLACKCAP MAY 4136

X

WMR TIMELESS 458 #  
**WMR PRIDE 03**  
WMR PRIDE 857

TRAIT	CED	BW	WW	YW	YH	SC	HP	CEM	MILK	TEAT	UDDR	FL	MW	MH	SEN	DOC	CLAW	ANGLE	PAP	HS	CW	Marb	RE	Fat	\$M	\$W	\$F	\$G	\$B	\$C
EPD	2	3.3	71	125	.5	1.01	12.1	1	29	.53	.55	1.09	69	.2	-21	15	.49	.44	1.38	.50	49	.25	.84	.030	64	65	88	34	123	224
ACC.	.40	.84	.79	.71	.51	.50	.23	.32	.47	.33	.32	.42	.44	.45		.35	.28	.28	.27	.30	.48	.36	.36	.33						
%RANK	80	90	40	40	50	45	40	95	30	55	45	30	50	65	60	70	55	30	60	50	55	85	30	65	50	50	65	80	80	75

OWNED BY:  
33 CATTLE COMPANY - KILLDEER ND  
SHIPWHEEL CATTLE CO - CHINOOK MT

**33 CATTLE COMPANY**  
KILLDEER, NORTH DAKOTA



Shipwheel Dreamer - everything we have dreamed of in a stud sire and more! Truly a bull that adds power, substance and do-ability - traits desperately needed in the industry and vital to commercial cowmen. Dreamer is athletic with extra muscle and overall shape and exhibits high libido. His daughters are deep-bodied, soft made good mothers with Right Time/Renown udder quality. Dreamer's highly proven dam, Pride 03, produced through her mid-teens and is the highest income producing cow at Shipwheel. Calves have been extremely consistent at birth - without extreme outliers. Dreamer offers tremendous maternal value and true performance while keeping frame in check. As a sire group, sons have dominated multiple Shipwheel sales.

**AAA 19534719**

**SHIPWHEEL DREAMER 8522**

TATTOO: 8522  
BORN: 04/09/2018  
BIRTH WEIGHT: 82  
205 DAY ADJ. WT: 668 (ET)  
365 DAY ADJ. WT:

**Semen \$25/Cert. \$40**

SON - SHIPWHEEL CATTLE CO



SON - SHIPWHEEL CATTLE CO





AAA #18159105

S THRIVE JAS 5515

FREEZE BRAND: 5515  
 BORN: 02/24/2015  
 BIRTH WEIGHT: 86  
 205 DAY ADJ. WT: 856 (118 RATIO)  
 365 DAY ADJ. WT: 1547 (121 RATIO)

Semen \$25/Cert. \$40

OWNED BY:  
 HALL STOCK FARM - BETHOLD ND  
 SPICKLER RANCH NORTH - GLENFIELD ND



D R SIERRA CUT 7404 #  
**TEHAMA REVERE** X **S SELENA 201 #**  
 TEHAMA ELITE BLACKBIRD T003 S SELENA 0418 #

# S THRIVE

271AN3613

TRAIT	CED	BW	WW	YW	YH	SC	HP	CEM	MILK	TEAT	UDDR	FL	MW	MH	SEN	DOC	CLAW	ANGLE	PAP	HS	CW	Marb	RE	Fat	\$M	\$W	\$F	\$G	\$B	\$C
EPD	6	1.2	66	123	.6	.94	15.3	9	30	.65	.65	.90	.56	.4	-15	35	.48	.45	2.18	.25	48	.66	.59	.078	80	67	94	48	142	264
ACC.	.66	.85	.85	.85	.86	.84	.54	.73	.76	.72	.70	.59	.55	.46		.85	.77	.77	.25	.29	.49	.46	.46	.40						
%RANK	55	50	55	45	40	50	5	40	25	30	20	95	65	50	45	1	50	35	75	15	60	50	60	95	20	45	55	55	60	45

Thrive has been a mainstay performance sire at Spickler Ranch North for good reason. If you like bigger scaled, stout structured, high volumed, heavy muscled cattle - tie into Thrive! With an outcross pedigree to most, the mating flexibility is endless. Quiet natured and great uddered, his daughters are just like his Pathfinder dam - fertile mamas that consistently raise big calves! His sons are always in high demand wherever they are offered. So balanced in their kind, Thrive cattle never go out of style! Put Thrive to work in your herd, you won't be disappointed!

DAUGHTER - SPICKLER RANCH NORTH



DAUGHTER - DIX ANGUS RANCH



AAA 17083256

WMR TIMELESS 081

FREEZE BRAND: 081  
 BORN: 01/16/2011  
 BIRTH WEIGHT: 80  
 205 DAY ADJ. WT: 898 (126 RATIO)  
 365 DAY ADJ. WT: 1175

Semen \$25/Cert \$40

081 is a perfect choice for those difficult mating decisions. Balanced EPDs & an outcross pedigree stacked with maternal legends - his daughters get the job done! His progeny are just like him - deep bodied, easy fleshing, great footed and high performing. 081 ran with cows above 7500 feet and had a PAP score of 41 as a 7 year old!



OWNED BY:  
 HERRON ANGUS - MEXICO MO  
 WHEELER MOUNTAIN ANGUS - WHITEHALL MT

LEACHMAN RIGHT TIME 338-5605  
**WMR TIMELESS 458 #** X **CONNEALY PACKER 547 #**  
 WMR BLACKCAP 521 WMR LUCY 910 #  
 WMR LUCY 720

271AN3814

WMR

# TIMELESS 081

TRAIT	CED	BW	WW	YW	YH	SC	HP	CEM	MILK	TEAT	UDDR	FL	MW	MH	SEN	DOC	CLAW	ANGLE	PAP	HS	CW	Marb	RE	Fat	\$M	\$W	\$F	\$G	\$B	\$C
EPD	4	2.9	75	130	.7	1.18	11.1	4	26	.29	.21	1.07	88	.5	-29	21	.45	.38	.26	.62	52	.69	.39	.107	57	66	102	45	148	249
ACC.	.59	.85	.85	.79	.65	.68	.31	.64	.71	.51	.49	.56	.50	.49		.58	.37	.32	.24	.31	.48	.42	.43	.39						
%RANK	70	85	30	35	30	30	55	85	50	95	95	40	25	40	80	40	35	10	30	70	50	45	80	95	65	50	40	60	55	60

## OUR PHILOSOPHY ON EPDS - A *BALANCED APPROACH*

EPDs can be a great tool to use in our genetic selection processes to indicate how one individual's progeny may perform relative to another. The numbers are derived based on the individual's own measurements relative to contemporaries, ancestors and often associated DNA markers. It seems that the breeding and marketing philosophy of many today is a never ending chase for more numbers...more growth, more marbling, more carcass weight, more milk and even more calving ease. But, what does "more" really mean? Do we really see it? And - if so, at what cost?

Lets consider performance - most of us still get paid for the pounds we sell. Therefore, we want to maximize our payweights within the constraints of our resources. In most cases, this means that our production systems (environments, forages, feed and management resources) will not allow genetics capable of extreme growth to express it. Higher weaning weight and yearling weight EPDs may only result in true added growth when extra feed resources are available to achieve it. And, higher growth potential usually leads to larger mature sizes - resulting in bigger cows, requiring more feed to be productive.

What about terminal traits? How much marbling, ribeye area and carcass weight EPDs are needed to make a profitable end product? There is nothing better than high quality beef! And, the consistent way today's beef industry provides quality is unmatched around the world. Genetic focus and selection have played large parts in increasing the supply of high

quality beef - coupled with feeding and management to reach these targeted end-points. One of the magic questions to us is "Where are the thresholds that maximize the profitability of a beef cattle enterprise?" While we do not necessarily believe there are antagonisms between terminal traits and other productivity-related traits such as reproduction, structural integrity and functionality - it does seem some of the fundamentals often get neglected in the chase for "more" small changes in some of these traits.

The very basic requirement for a profitable beef cattle enterprise is a live calf! This is why so much emphasis is placed on calving ease - particularly with heifers. We all want our cows and heifers to calve unassisted and get their calves up and going quickly. Calving Ease (CED and CEM) numbers are good tools to use to minimize incidences of calving difficulty. CED is usually a threshold trait - meaning, at some level, we may not gain anything. And, sometimes when we push CED to extremes, we may be shortening gestation length - resulting in smaller, weaker calves. In our minds, the ideal calf size is the biggest one the cow can have without issue - meaning no assistance, and no added stress on the cow or calf from a difficult birth or depleted body condition.

At BEEF-360, we always want "more", too..."more" balance in economically relevant traits, "more" consistency and predictability in our Sires' progeny, and "more" confidence in how they will work for you!

## *Where do you begin sorting?*



**At BEEF-360 - our sorts start in the field.**

# BEEF-360

# ANGUS SIRES

# EPD RANKINGS

<u>CALVING EASE DIRECT (CED)</u>	EPD	ACC
SHIPWHEEL BLS BRAVADO 1536	+16	.36
S WRANGLER 830	+14	.80
DLB LANDMAN 2223	+14	.41
MUSGRAVE JUMBO	+13	.68
PYRAMID BLACK HILLS 1032	+13	.36
LD CAPITALIST 316	+12	.94
GDAR JUSTIFIED 914	+12	.77
VDAR CONFLUENCE 4273	+12	.37
WOODHILL COMPLETE A130-C2	+11	.76
M DIAMOND RANAHAH 111	+11	.69

<u>WEANING WEIGHT (WW)</u>	EPD	ACC
MILLARS HONDO 349	+92	.77
M DIAMOND RANAHAH 111	+84	.84
TEHAMA PADRE H690	+83	.70
PGC NORTHERN LIGHTS	+82	.53
MILLARS DUKE 816	+81	.93
WOODHILL COMPLETE A130-C2	+79	.85
MUSGRAVE JUMBO	+78	.85
KOUPALS B&B HERDSMAN	+76	.43
WMR TIMELESS 081	+75	.85
PARTISOVER DEEP ROOTS 126	+75	.74

<u>YEARLING WEIGHT (YW)</u>	EPD	ACC
MILLARS HONDO 349	+154	.44
PGC NORTHERN LIGHTS	+144	.42
M DIAMOND RANAHAH 111	+140	.43
MUSGRAVE JUMBO	+136	.77
PARTISOVER DEEP ROOTS 126	+136	.61
TEHAMA PADRE H690	+136	.51
E/T MATERNAL ROOTS 318	+136	.36
KOUPALS B&B HERDSMAN	+132	.38
MILLARS DUKE 816	+130	.88
WMR TIMELESS 081	+130	.79

<u>SCROTAL CIRCUMFERENCE (SC)</u>	EPD	ACC
KOUPALS B&B HERDSMAN	+1.84	.48
KOUPALS B&B BRIDGER 2041	+1.63	.68
S A V DOWNSPOUT 1878	+1.51	.51
SHIPWHEEL BLS BRAVADO 1536	+1.48	.36
DLB LANDMAN 2223	+1.38	.54
GDAR JUSTIFIED 914	+1.23	.80
MILLARS DUKE 816	+1.22	.85
WMR TIMELESS 081	+1.18	.68
WOODHILL COMPLETE A130-C2	+1.15	.84
SHIPWHEEL BEAR PAW	+1.14	.35

<u>HEIFER PREGNANCY (HP)</u>	EPD	ACC
S THRIVE JAS 5515	+15.3	.54
CIRCLE L LANDMARK	+15.1	.32
GDAR JUSTIFIED 914	+14.4	.48
SHIPWHEEL BLS BRAVADO 1536	+14.1	.20
KOUPALS B&B HERDSMAN	+13.7	.18
WOODHILL COMPLETE A130-C2	+13.3	.59
DLB LANDMAN 2223	+13.3	.25
M DIAMOND RANAHAH 111	+13.3	.17
KOUPALS B&B BRIDGER 2041	+13.1	.32
IDEAL 0026 RITO OF REN	+13.1	.21

<u>CALVING EASE MATERNAL (CEM)</u>	EPD	ACC
CIRCLE L LANDMARK	+14	.56
MUSGRAVE JUMBO	+14	.53
GDAR JUSTIFIED 914	+13	.57
KOUPALS B&B BRIDGER 2041	+13	.35
LD CAPITALIST 316	+12	.92
DLB LANDMAN 2223	+12	.34
E/T MATERNAL ROOTS 318	+12	.27
WOODHILL COMPLETE A130-C2	+11	.73
J D PAY DIRT 546	+11	.63
TEHAMA PADRE H690	+11	.35

<u>MILK</u>	EPD	ACC
MILLARS HONDO 349	+35	.34
VDAR CONFLUENCE 4273	+34	.34
KOUPALS B&B BRIDGER 2041	+32	.37
MUSGRAVE MOXLEY	+32	.34
MILLARS DUKE 816	+31	.65
KOUPALS B&B HERDSMAN	+31	.33
S THRIVE JAS 5515	+30	.76
SHIPWHEEL DREAMER 8522	+29	.47
TEHAMA PADRE H690	+29	.37
SHIPWHEEL BEAR PAW	+29	.30

<u>DOCILITY (DOC)</u>	EPD	ACC
S THRIVE JAS 5515	+35	.85
S WRANGLER 830	+32	.79
MUSGRAVE JUMBO	+32	.49
M DIAMOND RANAHAH 111	+31	.43
SHIPWHEEL BEAR PAW	+29	.31
GDAR JUSTIFIED 914	+28	.82
MILLARS HONDO 349	+27	.36
E/T MATERNAL ROOTS 318	+27	.34
JD PAY DIRT 546	+26	.65
IDEAL 0026 RITO OF REN	+25	.34

<u>HAIR SHED (HS)</u>	EPD	ACC
PGC NORTHERN LIGHTS	0.09	.31
MUSGRAVE MOXLEY	0.13	.27
KOUPALS B&B HERDSMAN 4026	0.19	.28
WOODHILL COMPLETE A130 C-2	0.22	.58
S THRIVE JAS 5515	0.25	.29
S A V DOWNSPOUT 1878	0.26	.31
M DIAMOND RANAHAH 111	0.28	.21
VDAR CONFLUENCE 4273	0.28	.27
MILLARS HONDO 349	0.31	.27
KOUPALS B&B BRIDGER 2041	0.32	.33

<u>FOOT CLAW</u>	EPD	ACC
GDAR JUSTIFIED 914	.17	.67
KOUPALS B&B HERDSMAN 4026	.17	.28
MUSGRAVE MOXLEY	.29	.28
KOUPALS B&B BRIDGER 2041	.30	.52
SHIPWHEEL BLS BRAVADO 1536	.32	.26
E/T MATERNAL ROOTS 318	.33	.27
S A V DOWNSPOUT 1878	.34	.33
VDAR CONFLUENCE 4273	.34	.27
DLB LANDMAN 2223	.35	.31
S WRANGLER 830	.36	.60

<u>FOOT ANGLE</u>	EPD	ACC
E/T MATERNAL ROOTS 318	.27	.28
KOUPALS B&B HERDSMAN 4026	.30	.28
PARTISOVER DEEP ROOTS 126	.36	.53
SHIPWHEEL BLS BRAVADO 1536	.37	.26
WMR TIMELESS 081	.38	.32
GDAR JUSTIFIED 914	.39	.68
MUSGRAVE MOXLEY	.39	.28
PYRAMID BLACK HILLS 1032	.39	.27
SHIPWHEEL DREAMER 8522	.44	.28
LD CAPITALIST 316	.45	.89

<u>PULMONARY ARTERIAL PRESSURE (PAP)</u>	EPD	ACC
M DIAMOND RANAHAH 111	-2.19	.30
S WRANGLER 830	-1.61	.44
CIRCLE L LANDMARK	-1.31	.45
J D PAY DIRT 546	-1.19	.33
PGC NORTHERN LIGHTS	-0.64	.34
DLB LANDMAN 2223	-0.43	.32
S A V DOWNSPOUT 1878	+0.08	.29
WMR TIMELESS 081	+0.26	.24
LD CAPITALIST 316	+0.46	.69
TEHAMA PADRE H690	+0.58	.30

<u>CARCASS WEIGHT (CW)</u>	EPD	ACC
M DIAMOND RANAHAH 111	+72	.41
WOODHILL COMPLETE A130-C2	+71	.59
E/T MATERNAL ROOTS 318	+70	.36
MUSGRAVE JUMBO	+66	.47
SHIPWHEEL BEAR PAW	+62	.37
MILLARS HONDO 349	+60	.40
DLB LANDMAN 2223	+57	.45
PGC NORTHERN LIGHTS	+57	.39
PARTISOVER DEEP ROOTS 126	+55	.49
MUSGRAVE MOXLEY	+55	.40

<u>MARBLING (MARB)</u>	EPD	ACC
PGC NORTHERN LIGHTS	+1.07	.35
SHIPWHEEL BEAR PAW	+1.03	.33
J D PAY DIRT 546	+0.92	.47
E/T MATERNAL ROOTS 318	+0.87	.35
PARTISOVER DEEP ROOTS 126	+0.84	.45
TEHAMA PADRE H690	+0.84	.40
M DIAMOND RANAHAH 111	+0.84	.34
WOODHILL COMPLETE A130 C-2	+0.83	.54
PYRAMID BLACK HILLS 1032	+0.71	.34
DLB LANDMAN 2223	+0.70	.40

<u>RIB EYE AREA (RE)</u>	EPD	ACC
M DIAMOND RANAHAH 111	+1.22	.34
PARTISOVER DEEP ROOTS 126	+0.87	.45
S WRANGLER 830	+0.87	.45
SHIPWHEEL DREAMER 8522	+0.84	.36
PYRAMID BLACK HILLS 1032	+0.83	.34
E/T MATERNAL ROOTS 318	+0.80	.33
SHIPWHEEL BEAR PAW	+0.79	.31
DLB LANDMAN 2223	+0.78	.40
TEHAMA PADRE H690	+0.77	.40
MUSGRAVE MOXLEY	+0.72	.35

**EPDS CURRENT AS OF 1/08/2026** - for up-to-date EPDs, scan the QR code on BEEF-360 Angus Sires pictures.

# INDEX RANKINGS

\$ ENERGY (\$EN)	INDEX
CIRCLE L LANDMARK	+13
SHIPWHEEL BLS BRAVADO 1536	+12
KOUPALS B&B BRIDGER 2041	+4
S A V DOWNSPOUT 1878	+1
LD CAPITALIST 316	-2
E/T MATERNAL ROOTS 318	-4
GDAR JUSTIFIED 914	-5
PARTISOVER DEEP ROOTS 126	-5
DLB LANDMAN 2223	-5
J D PAY DIRT 546	-7

\$ MATERNAL (\$M)	INDEX
SHIPWHEEL BLS BRAVADO 1536	+116
KOUPALS B&B HERDSMAN	+112
E/T MATERNAL ROOTS 318	+98
GDAR JUSTIFIED 914	+96
CIRCLE L LANDMARK	+96
DLB LANDMAN 2223	+95
WOODHILL COMPLETE A130 C-2	+89
PARTISOVER DEEP ROOTS 126	+89
MILLARS HONDO 349	+88
MUSGRAVE MOXLEY	+88

\$ COMBINATION (\$C)	INDEX
E/T MATERNAL ROOTS 318	+334
M DIAMOND RANAHAN 111	+330
WOODHILL COMPLETE A130-C2	+322
PARTISOVER DEEP ROOTS 126	+309
GDAR JUSTIFIED 914	+305
DLB LANDMAN 2223	+303
MUSGRAVE JUMBO	+302
PGC NORTHERN LIGHTS	+301
SHIPWHEEL BLS BRAVADO 1536	+295
SHIPWHEEL BEAR PAW	+292

## BREED AVERAGES FOR CURRENT ANGUS SIRE

TRAIT	CED	BW	WW	YW	YH	SC	HP	CEM	MILK	TEAT	UDDR	FL	MW	MH	\$EN	DOC	CLAW	ANGLE	PAP	HS	CW	Marb	RE	Fat	\$M	\$W	\$F	\$G	\$B	\$C
EPD	6	+1.2	66	117	.5	.87	19	8	26	.54	.53	1.05	64	.4	-16	19	.48	.48	1.20	.51	50	.66	.65	.019	62	63	95	53	149	256

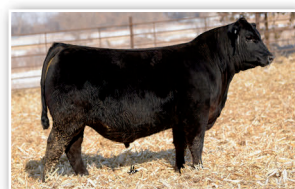
# progeny **PROVEN...**

At BEEF-360, we have the greatest confidence in how our Sires will work for you when we study their progeny. As we think about it, though, “proven” is a marketing term which - alone - may not tell us enough. Just because a bull has calves on the ground - or even daughters in production - does not mean that they measure up to our standards or your expectations. The “proven” bulls in this Genetics Guide are known to sire offspring which are functional and productive in diverse environments; bring true performance, consistency and uniformity in their progeny; and create real value.

With all of the tools available today, we still believe some of the best information is actual measured performance. That said, management and resources differ widely - making it useless to try to compare actual weights between herds. This is why ratios are a better way to see how an individual’s progeny measure up relative to their within-herd contemporaries. More data from more herds increases our confidence in just how our sires measure up.

THIS TABLE INCLUDES BEEF-360 ANGUS SIREs FEATURED IN THIS GENETICS GUIDE THAT EACH HAVE OVER 100 PROGENY PERFORMANCE RECORDS AND DAUGHTERS IN PRODUCTION.

SIRE	Birth Wt. Ratio	Herds/ # of Progeny	Wean Wt. Ratio	Herds/ # of Progeny	Yearling Wt. Ratio	Herds/ # of Progeny	Daughters' Nursing Ratio	Herds/ # of Progeny	% IMF Ratio	Herds/ # of Progeny	Ribeye Ratio	Herds/ # of Progeny
LD CAPITALIST 316	99	948/10031	101	771/8826	101	486/5149	100	654/6649	103	310/3160	100	310/3163
MILLARS DUKE 816	98	144/2371	102	132/2247	102	70/910	103	24/227	95	35/480	98	35/480
S WRANGLER 830	99	72/1205	100	67/1103	101	35/439	101	22/105	100	15/276	101	15/278
S THRIVE JAS 5515	101	26/766	100	23/726	101	15/515	102	23/547	104	9/311	101	9/311
WOODHILL COMPLETE	100	52/758	102	45/642	101	27/498	101	36/363	102	26/298	103	26/298
WMR TIMELESS 081	101	22/554	102	21/543	103	14/259	102	24/372	99	7/70	101	7/70
GDAR JUSTIFIED 914	100	45/862	101	37/799	103	24/407	99	8/114	97	14/128	99	14/129
J D PAY DIRT 546	100	30/432	101	24/399	100	16/272	100	23/231	106	8/177	98	8/177
CIRCLE L LANDMARK	101	24/389	100	24/363	101	17/228	98	20/224	101	11/84	98	11/84
MUSGRAVE JUMBO	99	60/607	101	48/483	101	24/224	100	17/67	103	12/92	100	12/92
SHIPWHEEL DREAMER	101	7/274	100	6/217	101	3/117	100	1/44	100	1/2	100	1/2





ASA 3550862

J-J MR AMERICAN EAGLE 938G

3/4 SM, 1/4 AN  
 HOMOZYGOUS BLACK  
 HOMOZYGOUS POLLED  
 TATTOO: J-J 938G  
 BORN: 02/26/2019  
 BIRTH WEIGHT: 90  
 205 DAY ADJ. WT: 810  
 365 DAY ADJ. WT: 1378

Semen \$30

OWNED BY:  
 GERLOFF FARMS - BLAND MO  
 J-C SIMMENTALS - CLARE MI



J/C Simmentals  
 CLARE, MI

HOOK'S BLACK HAWK 50B  
**HOOK'S EAGLE 6E** X J-J MS NTL CHARM 367A  
 HOOK'S CRYSTAL 1C GW MISS LUCKY CHARM 745J

# J-J MR AMERICAN EAGLE 49SM2063

TRAIT	CE	BW	WW	YW	ADG	DMI	\$GN	MCE	MILK	MWW	STAY	DOC	CW	YG	MARB	BF	REA	SF	API	TI
EPD	12.6	-0.1	88.0	143.9	0.35	1.28	0.067	6.8	23.3	67.2	19.6	16.1	56.0	-0.32	0.62	-0.066	1.09	-0.48	163.7	95.5
ACC.	.66	.80	.77	.79	.79	.40	.42	.54	.50	.57	.41	.48	.60	.46	.56	.49	.55	.06		
%RANK	40	50	20	15	15	90	45	55	55	35	10	15	15	15	25	15	5		15	15

J-J American Eagle is one of the stoutest Hook's Eagle sons to surface! His progeny have dominated past Gerloff Farms sales. American Eagle sires big footed, bold progeny with tremendous base width, rib and dimension, and more scale & length of body than similar pedigrees. Backed by a highly productive Dam with a calving interval of 368 days with 9 calves and progeny ratios of WW - 109, YW - 110, IMF - 109, REA - 102. American Eagle sires breed-leading performance and carcass quality.

SON - GERLOFF FARMS



ASA 2921978

**TUELL WINCHESTER A303**  
 3/4 SM, 1/4 AN  
 HOMOZYGOUS BLACK/HOMOZYGOUS POLLED  
 TATTOO: A303  
 BORN: 09/10/2013  
 BIRTH WEIGHT: 79  
 205 DAY ADJ. WT: 705  
 365 DAY ADJ. WT: 1255

Semen \$25

Powerfully constructed best describes the Winchester-sired cattle. Progeny are deep, stout, and chocked full of muscle. Winchester progeny continue to out-perform others. Cow families run deep here with 6 generations of donor dams. Holster some Winchester for your herd and watch them grow!

OWNED BY:  
 TUELL CATTLE - ECKLEY CO  
 ED BASLER - AKRON CO

**ED BASLER**  
 AKRON, CO



SVF/NJC MO BETTER M217  
**CCR DREAM BETTER 3058 T**  
 CCR DAY DREAMER 5065R

X

MR NLC UPGRADE U8676  
**RRIT MISS UPGRADE 619X**  
 G A R BASIN MAX A22



59SM276

# TUELL WINCHESTER

TRAIT	CE	BW	WW	YW	ADG	DMI	\$GN	MCE	MILK	MWW	STAY	DOC	CW	YG	MARB	BF	REA	SF	API	TI
EPD	10.9	0.7	77.3	125.8	0.3	0.44	0.127	5.2	16.8	55.4	6.9	8.6	42.8	-0.27	0.5	-0.036	0.98	-0.45	123.0	83.8
ACC.	.57	.70	.63	.64	.64	.40	.42	.47	.41	.51	.38	.44	.53	.40	.50	.42	.47	.18		
%RANK	60	65	55	45	35	25	5	80	95	85	99	95	40	30	35	50	10		70	50



106SM1048

HOOK'S ENCORE 65E  
**BRIDLE BIT RESOURCE G9117**  
 BRIDLE BIT MISS B452  
 X  
 COLORADO BRIDLE BIT E752  
**BRIDLE BIT MISS G948**  
 BRIDLE BIT MISS X002

# BRIDLE BIT RECHARGE

TRAIT	CE	BW	WW	YW	ADG	DMI	\$GN	MCE	MILK	MWW	STAY	DOC	CW	YG	MARB	BF	REA	SF	API	TI
EPD	16.9	-2.3	84.8	135.4	0.32	1.3	0.027	8.6	30.7	73.0	17.5	16.3	60.3	-0.31	0.67	-0.044	1.28	-0.36	182.5	103.2
ACC.	.66	.81	.77	.75	.75	.34	.35	.46	.27	.39	.39	.61	.47	.38	.55	.46	.42	.04		
%RANK	4	10	35	25	15	95	75	10	10	15	30	10	2	75	4	85	3		3	3

**OWNED BY:**  
 CK CATTLE COMPANY - HIGHMORE SD  
 WAGER CATTLE - GETTYSBURG SD  
 WINDY CREEK CATTLE CO - SPENCER SD  
 TODD KLOCKGETHER - CHARTER OAK IA



Recharge brings as much genetic power, phenotype, and quality as you can find in one complete package. Incredible structure and foot quality with tremendous stoutness, power, and body - he injects these traits into his progeny. Recharge has over 350 registered offspring - solidifying his low birth weight, calving ease, and performance. His first sons were a dominating force at the 2025 CK Cattle & Wager Cattle Bull Sale. Daughters will be calving in this winter and possess the balance of elegance & powerful maternal design. Outcross pedigree along with proven EPDs as good as you can write, proven heifer safe with added muscle, real growth, size, and performance...all with a dominating balance and look - Recharge will move your program forward!

ASA 4058272

BRIDLE BIT RECHARGE K256

PUREBRED  
 HOMOZYGOUS BLACK  
 HOMOZYGOUS POLLED  
 TATTOO: K256  
 BORN: 02/05/2022  
 BIRTH WEIGHT: 75  
 205 DAY ADJ. WT: 728 (107 RATIO)  
 365 DAY ADJ. WT: 1232 (109 RATIO)

Semen \$50

**Todd Klockgether**  
 Charter Oak, Iowa



SON - CK CATTLE



DAUGHTER - CK CATTLE



SON - CK CATTLE



# WE'RE INDEPENDENT

...JUST LIKE YOU

Much of the influence for production inputs and marketing is driven by outside interests and foreign-owned companies – creating competition for the American rancher. Many other Beef Genetics companies are largely focused on exporting semen, breeding large numbers of dairy cattle and corporate integration. At BEEF-360, we are committed to supporting the freedoms and independence of families whose livelihoods and lifestyles are rooted in producing the highest quality, safest, most wholesome protein in the world – American Beef!



*At BEEF-360 - we understand the value of common sense stockmanship - love and respect for livestock & land - & the resiliency and perseverance of America's families & communities supported by beef cattle. These core values drive our efforts to help you succeed.*



**129HP0546** SHF DAYBREAK Y02 D287 ET  
**SHF HOUSTON D287 H086**  
 SHF MISS 14 20Z D223  
 X  
 KT SMALL TOWN KID 5051  
**CSU MISS KID RAM 0235**  
 CSU MISS DOMINATOR 8207

# CSU HOUSTON RAM 3212

TRAIT	CED	BW	WW	YW	DMI	SC	SCF	MM	M&G	MCE	MCW	UDDER	TEAT	CW	FAT	REA	MARB	BMI	BII	CHB
EPD	10.3	0.8	71	119	0.7	1.7	17.5	26	62	4.6	135	1.40	1.40	83	.064	.49	.31	392	494	149
ACC.	.35	.52	.48	.49	.15	.40	.31	.43		.37	.38	.44	.44	.41	.42	.41	.43			
%	8	16	7	4	90	5	50	61	25	18	99	10	14	23	91	51	16	40	30	18

**OWNED BY:**  
 FRENZEN POLLED HEREFORDS - FULLERTON NE  
 COLORADO STATE UNIVERSITY



Houston Ram is a complete package of phenotypic excellence, athleticism, commanding presence and balanced data. Raised at Colorado State University, he was a feature of their 2025 National Western display where he was discovered by astute cattlemen. After their successful purchase, the Frenzen family has gone all-in on incorporating Houston Ram into their program. Long and level, fluid in motion and highly pigmented - Houston Ram is expected to sire tremendously balanced purebred Herefords and baldie cattle that knock your socks off! When looking at EPDs and Indexes, he is hard to beat!

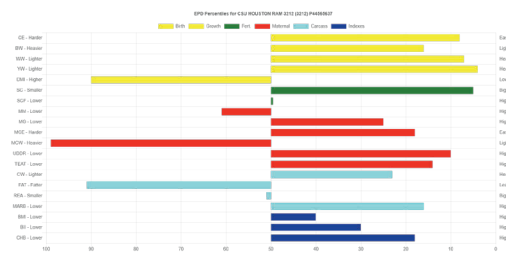
**AHA 44565637**

**CSU HOUSTON RAM 3212**

**HOMOZYGOUS POLLED**  
**TATTOO: 3212**  
**BORN: 04/28/2023**  
**BIRTH WEIGHT: 98 RATIO**  
**205 DAY ADJ. WT: 108 RATIO**  
**365 DAY ADJ. WT: 112 RATIO**

**Semen \$30/Cert. \$50**

**SALE PICTURE**



AHA 44051992

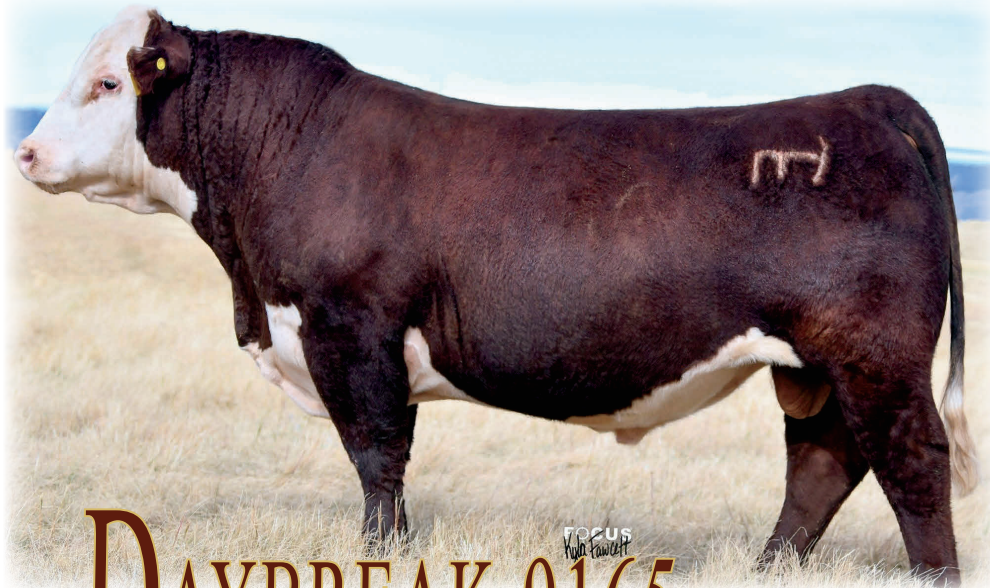
AHA 44051992

**PYRAMID DAYBREAK 9165**  
 HOMOZYGOUS POLLED  
 TATTOO: 9165  
 BORN: 04/03/2019  
 BIRTH WEIGHT: 91  
 205 DAY ADJ. WT: 779  
 365 DAY ADJ. WT: 1237

Semen \$30/Cert. \$50  
 limited supply

OWNED BY:  
 RAUSCH HEREFORDS - HOVEN SD  
 FREDERICKSON RANCH - SPEARFISH SD

**Rausch Herefords**  
 HOVEN, SOUTH DAKOTA



**PYRAMID DAYBREAK 9165**

272HP0104

SHF YORK 19H Y02 × PYRAMID DOMINO 2014  
**SHF DAYBREAK Y02 D287 ET** × **FHF 2014 RENAE 175B (DOD)**  
SHF MISS M326 T08 ET FHF 4029 RENAE 43Y

TRAIT	CED	BW	WW	YW	DMI	SC	SCF	MM	M&G	MCE	MCW	UDDER	TEAT	CW	FAT	REA	MARB	BMI	BII	CHB
EPD	7.9	0.2	67	106	0.6	1.8	17.7	33	66	5.0	110	1.30	1.20	86	.044	.90	.19	399	487	141
ACC.	.51	.85	.77	.76	.20	.66	.39	.53		.49	.48	.65	.66	.43	.53	.43	.47			
%	17	11	14	17	82	3	48	17	12	14	86	28	61	17	74	5	37	37	33	26

Daybreak 9165 exhibits more length of body, performance and a notch more frame than his sire. Backed by a true power cow from Frederickson Ranch with progeny ratios of 5 @ 114.6 for weaning and 4 @ 112 for yearling. Daybreak 9165 brings an elite spread from birth to weaning and yearling, ranks near the top of the breed for all profit indexes and carcass traits. 100% eye pigment and red to the ground - Daybreak 9165 is the sire you are looking for to add a shot of performance in the right package.



49HP3275

**FTF RELEVANT**

EFBEEF FOREMOST U208 × FTF MS REVOLUTION 626D  
**EBEEF TFL U208 TESTED X651 ET** × **FTF MS REVOLUTION 626D**  
EBEEF P606 MABEL R415 OVF PRETTY MISS 702T (DOD)

TRAIT	CED	BW	WW	YW	DMI	SC	SCF	MM	M&G	MCE	MCW	UDDER	TEAT	CW	FAT	REA	MARB	BMI	BII	CHB
EPD	15.0	-5.3	50	70	0.4	1.1	27.2	29	55	7.3	51	1.30	1.20	46	.034	.45	.49	496	595	112
ACC.	.56	.79	.70	.69	.39	.47	.42	.55		.50	.46	.65	.66	.61	.60	.59	.61			
%	2	1	81	93	60	44	2	40	59	4	4	28	61	98	59	58	5	5	5	71

Relevant has proven to be one of the best calving ease bulls the Hereford breed has ever seen! His calves consistently come easy and exhibit that all important calf vigor. Backed by a tremendous cow family with impeccable udder design and maternal performance, Relevant is creating model mama cows. Whether you are developing commercial heifers or manage an elite seedstock herd, Relevant is a valuable genetic package combining proven calving ease, maternal prowess, and breed leading marbling in one convenient package!

AHA 43911639

**FTF RELEVANT 831F**

HOMOZYGOUS POLLED  
 TATTOO: 831  
 BORN: 01/16/2018  
 BIRTH WEIGHT: 65  
 205 DAY ADJ. WT: 756  
 365 DAY ADJ. WT: 1191

Semen \$25/Cert. \$50

OWNED BY:  
 JORDAN HEREFORDS - WARENTON MO  
 FALLING TIMBER FAM - MARTHASVILLE MO

**JORDAN HEREFORDS**  
 WARRENTON, MO





49HP3243

HUTH PROSPECTOR K085  
**FTF PROSPECTOR 145Y**  
 FTF CHICK A BOOM 7227T

X

TH 122 711 VICTOR 719T  
**FTF VERONICA 4107B (DOD)**  
 FHF MS REVOLUTION 2424Z (DOD)

# FTF CONFIDENCE

TRAIT	CED	BW	WW	YW	DMI	SC	SCF	MM	M&G	MCE	MCW	UDDER	TEAT	CW	FAT	REA	MARB	BMI	BII	CHB
EPD	2.7	1.9	68	114	0.5	0.9	24.4	30	64	5.3	116	1.20	1.30	82	.064	.27	.21	483	582	136
ACC.	.49	.76	.67	.64	.19	.48	.41	.53		.45	.38	.61	.61	.42	.45	.44	.47			
%	58	34	12	7	72	67	5	33	18	12	92	58	34	26	91	85	32	7	7	32

OWNED BY:  
 STEINBECK FARMS - HERMANN MO  
 FALLING TIMBER FARM - MARTHASVILLE MO

**STEINBECK FARMS**  
 HERMANN, MO

Confidence brings a highly proven and respected pedigree, is homozygous polled, fully pigmented and goggle eyed, red legged, with unsurpassed body and style. His Dam is one of the highest producing cows in the Falling Timber herd. Confidence sires moderate birthweights, breed-leading weaning and yearling weights, added frame, volume & length. Progeny are short marked and his daughters exhibit exceptional udder quality. With 4 direct Dams of Distinction - the maternal predictability is unmatched! Use with "Confidence" to make outstanding Hereford cattle.

**AHA 43751234**

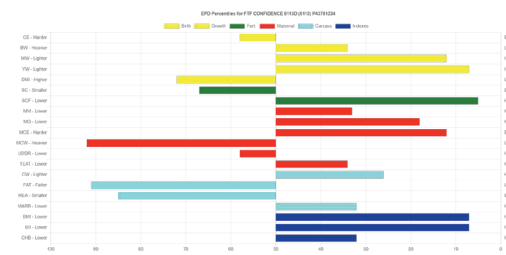
**FTF CONFIDENCE 6113D**

HOMOZYGOUS POLLED  
 TATTOO: 6113  
 BORN: 09/08/2016  
 BIRTH WEIGHT: 58  
 205 DAY ADJ. WT: 711  
 365 DAY ADJ. WT: 1234

Semen \$25/Cert. \$50

**FTF** **Falling Timber Farm**  
 Beef Genetics and Nutrition

SON FALLING TIMBER FARM



At BEEF-360, everything we do is "Focused on the Female". The cowherd is the foundation for all successful beef operations. We are committed to providing genetics and services that get beef cows bred and create fertile and productive replacement females built to last.

Check out [www.BEEF-360.com](http://www.BEEF-360.com) for the latest in BEEF-360 Genetics, breeding and management tools, sales reps and industry partners.



# LARGES PORTABLE AI BARN

A Great Asset to Your AI and Embryo Transfer Business



Several Options Available

Single Stall (Stationary or Portable)

2 Stall Portable

Gooseneck 2 Stall



INTRODUCING  
OUR NEWEST  
MODEL



Portable 2 stall  
deluxe model with  
Gooseneck Hitch

LARGES CATTLE SERVICES - Ryan Large, Owner · 308-340-9859 · [lcsbarns20@gmail.com](mailto:lcsbarns20@gmail.com) · [www.largesbreedingbarns.com](http://www.largesbreedingbarns.com)

THREE GENERATIONS DEEP - CARRYING ON THE LEGACY



271AR6250

BASIN HOBO 0545  
**TAC DRIFTER H10**  
 TAC MS VERNA F66 ET

X

C-T GRAND STATEMENT 1025  
**C-T VERDI 3009**  
 C-T VERDI 1030

# C-T OPEN RANGE

TRAIT	ProS	HB	GM	CED	BW	WW	YW	ADG	DMI	Milk	ME	HPG	CEM	STAY	Marb	YG	CW	REA	Fat
EPD	160	80	79	16	-3.9	71	122	0.31	1.10	33	0	6	9	20	0.62	0.04	34	0.28	0.01
ACC.				50	49	51	52	52	32	20	9	9	41	33	38	32	42	38	33
%	6	12	13	22	17	37	25	17	80	6	30	98	15	6	23	44	20	25	47

OWNED BY:  
 C-T RED ANGUS - MANHATTAN MT  
 HAWKER RED ANGUS - BLACKFOOT ID

C-T RED ANGUS 



Open Range was the high selling C-T bull at the 2024 Feddes/C-T Sale. TAC Drifter-sired cattle are some of the most sought after genetics in the country - combining calving ease, real world performance, solid carcass data with eye catching phenotype and great feet and legs. Open Range's dam is a 13 year old C-T Grand Statement daughter, proven with great longevity and sound phenotype. She has a beautiful foot structure and udder with lots of body capacity and length. Feminine fronted and eye catching - she ranks in the top 1% ProS, 8% HB, 3% GM and 3% Marb. Open Range stands in the top 1% ProS, 3% HB, 7% GM, 10% BW, 5% CEM, and 3% Stay. Above average frame with solid feet and legs and a Dark Cherry color - he had great individual performance - 98 BR, 106 WR, and 105 YR.

DAM - C-T VERDI 3009



RAAA 4799552

C-T OPEN RANGE 3050

TATTOO: 3050  
 BORN: 01/24/2023  
 BIRTH WEIGHT: 79  
 205 DAY ADJ. WT: 688 (106 RATIO)  
 365 DAY ADJ. WT: 1116 (105 RATIO)

Semen \$30



RAAA 4237524

LACY MOV'N ON 417 063G

TATTOO: 063G  
 BORN: 09/15/2019  
 BIRTH WEIGHT: 89 (ET)  
 205 DAY ADJ. WT: 780 (ET)  
 365 DAY ADJ. WT: 1337 (ET)

Semen \$30 deceased/limited supply

OWNED BY:  
 LACY'S RED ANGUS - DREXEL MO



LACY FHG LEGACY 6097  
**LACY LEGACY 6097 417** X **LACY MARIE 8190**  
 LACY LAKOTA 122 VDAR REBELAS 401

# LACY MOV'N ON

49AR3448

TRAIT	ProS	HB	GM	CED	BW	WW	YW	ADG	DMI	Milk	ME	HPG	CEM	STAY	Marb	YG	CW	REA	Fat
EPD	156	78	77	15	-1.5	75	115	0.25	1.12	33	-6	7	10	17	.74	-.09	34	0.40	-.03
ACC.				59	70	64	64	64	41	29	14	40	48	37	42	36	47	44	35
%	7	14	15	29	54	25	36	51	82	7	11	96	9	25	12	8	21	14	5

Mov'N On is a man amongst boys with his stout build, length, and overall performance he presents. He brings an old school pedigree full of proven cow makers with a great numeric data set, all in a big footed, rugged package! His donor dam, Lacy Marie 8190, was a maternal matriarch and one of Dan Lacy's favorites. Mov'N On progeny exhibit his correctness, style, and early growth. Look to Mov'n On to sire cattle with more scale, bone, and growth in an attractive package, and he presents tremendous mating options within the Red Angus breed. Mov'n your herd On!

DAUGHTER - LACY'S RED ANGUS



RAAA 3486945

RAVN LINEBACKER C537

TATTOO: C537  
 BORN: 3/28/2015  
 BIRTH WEIGHT: 66  
 205 DAY ADJ. WT: 571 (111 RATIO)  
 365 DAY ADJ. WT: 840 (109 RATIO)

Semen \$25

Linebacker cattle exhibit his tremendous length of body, depth and stoutness of rib, with massive shape down their top and out through their rump. Sound in their structure, Linebacker progeny are some of the best footed reds you'll find. Whether in a low-input or a high-input environment, Linebacker cattle rise to the top of the herd for performance and do-ability.

OWNED BY:  
 RAVNSCROFT RED ANGUS - NENZEL NE



5L ADVOCATE 817-14W

BADLANDS STATEMENT 70Y

**5L DEFENDER 560-30Z** X **RAVN BONNEBELL A325**

5L BLACK ADINA 525-560

PAULS BONNEBELL 933



272AN0537

# RAVN LINEBACKER

TRAIT	ProS	HB	GM	CED	BW	WW	YW	ADG	DMI	Milk	ME	HPG	CEM	STAY	Marb	YG	CW	REA	Fat
EPD	31	-14	45	13	-1.2	89	138	0.31	1.55	25	12	7	4	4	0.57	-.04	21	0.28	0.00
ACC.				69	83	79	79	79	41	62	34	46	62	49	56	44	59	54	47
%	98	99	59	51	60	5	8	20	96	60	85	4	91	99	29	16	55	25	27



106AR6794

BROWN JYJ REDEMPTION Y1334  
**C-T RED ROCK 5033**  
 C-T VERDI 1030

X

PIE ONE OF A KIND 352  
**C-T LINSEY 8119**  
 C-T LINSEY 0964

# C-T REPUTATION

TRAIT	ProS	HB	GM	CED	BW	WW	YW	ADG	DMI	Milk	ME	HPG	CEM	STAY	Marb	YG	CW	REA	Fat
EPD	90	30	60	14	-3.6	88	137	0.31	1.07	36	10	7	6	13	0.54	-.03	28	0.28	-.01
ACC.				74	88	85	83	83	38	53	34	48	61	44	49	41	65	50	38
%	64	80	36	43	21	5	8	19	78	2	78	97	59	67	33	17	34	25	14

OWNED BY:  
 C-T RED ANGUS - MANHATTAN MT  
 OVERMILLER RED ANGUS - SMITH CENTER KS

C-T RED ANGUS 



Reputation is one of the most demanded sires in the Red Angus breed. Phenotypically, Reputation is flawless. Starting at the ground, he stands on huge, square feet and is athletic on the move. He is above average in stature, possesses tremendous width and power through his hip, is bold centered and massive. Reputation is tremendously masculine - with a look of a true stud bull! And, he is deep cherry red in color. Reputation is consistently passing on these traits to his offspring. Progeny are extremely sought after and consistent sale toppers. If making Red Angus cattle better is high on your list, look no further than Reputation!

RAAA 4296453

C-T REPUTATION 0094

TATTOO: 0094  
 BORN: 02/08/2020  
 BIRTH WEIGHT: 72  
 205 DAY ADJ. WT: 860 (113 RATIO)  
 365 DAY ADJ. WT: 1343 (113 RATIO)

Semen \$30

SON - OVERMILLER RED ANGUS



DAUGHTER - C-T RED ANGUS



SON - C-T RED ANGUS



# SIRE PARTNERS

## ...Owners and Breeders of BEEF-360 Sires

**ARNTZEN ANGUS RANCH**  
HILGER, MONTANA  
BRAD: 406-350-4000  
KEVIN: 406-350-1612  
KROUPALS B&B BRIDGER

**BARTELS ANGUS**  
RIVERTON, NEBRASKA  
MIKE: 402-746-4858  
TEHAMA PADRE H690

**BILLINGSLEY ANGUS FARM**  
KEITHVILLE, LOUISIANA  
DAVID: 318-426-4320  
DLB LANDMAN 2223

**BOTTS ANGUS RANCH**  
HUNTLEY, MONTANA  
BEAU: 541-263-0988  
S WRANGLER 830

**CK CATTLE**  
HIGHMORE, SOUTH DAKOTA  
CHRIS: 605-769-0142  
BRIDLE BIT RECHARGE K256

**CASEY GREEN CATTLE CO.**  
BISHOP, GEORGIA  
CASEY: 706-540-3793  
S A V DOWNSPOUT 1878

**CIRCLE L ANGUS**  
WISE RIVER, MONTANA  
CORY: 406-832-3535  
CIRCLE L LANDMARK  
PGC NORTHERN LIGHTS

**CURRY CATTLE CO**  
VALIER, MONTANA  
JEREMY: 406-788-5462  
SHIPWHEEL BEAR PAW

**C-T RED ANGUS**  
MANHATTAN, MONTANA  
CRAIG: 406-282-9029  
C-T OPEN RANGE 3050  
C-T REPUTATION 0094

**ELROD & TOLBERT**  
TALMO, GEORGIA  
COLE: 678-410-1312  
E/T MATERNAL ROOTS 318  
PARTISOVER DEEP ROOTS 126

**FALLING TIMBER FARM**  
MARTHASVILLE, MISSOURI  
JOHN: 636-358-4161  
FTF CONFIDENCE 6113D  
FTF RELEVANT 831F

**FREDERICKSON RANCH**  
SPEARFISH, SOUTH DAKOTA  
NATE: 605-254-4872  
PYRAMID BLACK HILLS 1032  
PYRAMID DAYBREAK 9165  
SHIPWHEEL BEAR PAW

**FRENZEN ANGUS & HEREFORD**  
FULLERTON, NEBRASKA  
ERIC: 308-550-0238  
GALEN: 308-550-0237  
CSU HOUSTON RAM 3212

**GARTNER-DENOWH ANGUS RANCH**  
SIDNEY, MONTANA  
CHAD: 406-489-1762  
GDAR JUSTIFIED 914

**GERLOFF FARMS**  
BLAND, MISSOURI  
DAKOTA: 573-823-7477  
J-J AMERICAN EAGLE 938G

**HALL STOCK FARMS**  
BERTHOLD, NORTH DAKOTA  
ZAC: 701-595-6887  
S THRIVE JAS 5515

**HAWKER RED ANGUS**  
BLACKFOOT, IDAHO  
PRESTON: 208-604-2765  
C-T OPEN RANGE 3050

**HERRON BROTHERS ANGUS**  
MEXICO, MISSOURI  
TIM: 573-473-2087  
WMR TIMELESS 081

**HIDEAWAY CATTLE COMPANY**  
STEVENSVILLE, MONTANA  
JOHN: 916-719-8522  
VDAR CONFLUENCE 4273

**J/C SIMMENTALS**  
CLARE, MICHIGAN  
JOHN: 989-429-2834  
J-J AMERICAN EAGLE 938G

**JORDAN HEREFORDS**  
WARRENTON, MISSOURI  
MIKE: 636-359-3741  
FTF RELEVANT 831F

**SCOTT KNUTSON**  
HELENA, MONTANA  
406-439-2016  
SHIPWHEEL BRAVADO 1536

**KOUPAL'S B&B ANGUS**  
DANTE, SOUTH DAKOTA  
BUD: 605-491-2102  
KROUPALS B&B BRIDGER  
KROUPALS B&B HERDSMAN

**LACY'S RED ANGUS**  
DREXEL, MISSOURI  
DAN: 913-909-1912  
LACY MOV'N ON 417 063G

**LISCO ANGUS**  
DOUGLAS, WYOMING  
DICK: 307-359-0167  
M DIAMOND RANAHAH 111

**LUDDINGTON CATTLE**  
FREEDOM, OKLAHOMA  
KY: 580-327-7127  
LD CAPITALIST 316

**M DIAMOND ANGUS**  
GLENROCK, WYOMING  
BRAD: 307-359-1162  
E/T MATERNAL ROOTS 318  
M DIAMOND RANAHAH 111  
S WRANGLER 830

**MEAD FARMS**  
BARNETT, MISSOURI  
ALAN: 573-216-0210  
J D PAY DIRT 546

**MILLAR ANGUS**  
STURGIS, SOUTH DAKOTA  
**JON: 605-347-2855**  
MILLARS DUKE 816  
MILLARS HONDO 349

**MOORE ANGUS**  
ARTESIAN, SOUTH DAKOTA  
**JERRY: 605-999-3681**  
MILLARS DUKE 816

**MR ANGUS**  
WHEATLAND, WYOMING  
**JEN: 307-331-1530**  
KROUPALS B&B HERDSMAN

**MUSGRAVE ANGUS**  
GRIGGSVILLE, ILLINOIS  
**TYLER: 217-242-1160**  
**ANDY: 217-242-2732**  
CIRCLE L LANDMARK  
LD CAPITALIST 316  
MUSGRAVE JUMBO  
MUSGRAVE MOXLEY

**OVERMILLER RED ANGUS**  
SMITH CENTER, KANSAS  
**BRENT: 785-282-0485**  
**KELLY: 785-282-1182**  
C-T REPUTATION 0094

**PARTISOVER RANCH**  
COLBERT, GEORGIA  
**RANDY: 706-614-0496**  
PARTISOVER DEEP ROOTS 126

**PETERSON GRAIN & CATTLE**  
HAVRE, MONTANA  
**CASEY: 406-945-1355**  
PGC NORTHERN LIGHTS

**POLK CATTLE COMPANY**  
RAYNESFORD, MONTANA  
**JED: 210-382-8537**  
SHIPWHEEL BEAR PAW

**PREDESTINED CATTLE CO.**  
WADLEY, GEORGIA  
**KYLE: 478-494-9593**  
PARTISOVER DEEP ROOTS 126

**R.A. BROWN RANCH**  
THROCKMORTON, TEXAS  
**DONNELL: 940-849-0611**  
WOODHILL COMPLETE A130-C2

**RAUSCH HEREFORDS**  
HOVEN, SOUTH DAKOTA  
**JACOB: 605-769-0552**  
**PETER: 605-281-0471**  
PYRAMID DAYBREAK 9165

**RAVENSCROFT RED ANGUS**  
NENZEL, NEBRASKA  
**ERIC: 402-322-9248**  
RAVN LINEBACKER C537

**ROCK CREEK ANGUS RANCH**  
PARAGOULD, ARKANSAS  
**TOMMY: 870-215-2188**  
GDAR JUSTIFIED 914

**SCHAFF ANGUS VALLEY**  
SAINT ANTHONY, NORTH DAKOTA  
**KELLY: 701-445-7465**  
MILLARS DUKE 816  
S A V DOWNSPOUT 1878

**SENENICH FARMS**  
BROOKFIELD, MISSOURI  
**PHILLIP: 660-473-4640**  
J D PAY DIRT 546

**SHIPWHEEL CATTLE COMPANY**  
CHINOOK, MONTANA  
**KLINT: 406-399-2962**  
IDEAL 0026 RITO OF REN  
MILLARS HONDO 349  
SHIPWHEEL BEAR PAW  
SHIPWHEEL BRAVADO 1536  
SHIPWHEEL DREAMER 8522

**SPICKLER RANCH SOUTH**  
GLENFIELD, NORTH DAKOTA  
**NATHAN: 701-650-1077**  
S WRANGLER 830

**SPICKLER RANCH NORTH**  
GLENFIELD, NORTH DAKOTA  
**JUSTIN: 701-674-3170**  
GDAR JUSTIFIED 914  
S THRIVE JAS 5515

**STEINBECK FARMS**  
HERMANN, MISSOURI  
**RICK: 573-680-0954**  
FTF CONFIDENCE 6113D

**STYLES ANGUS**  
BRENTFORD, SOUTH DAKOTA  
**CHRIS: 605-887-7000**  
MUSGRAVE JUMBO

**TEHAMA ANGUS RANCH**  
GERBER, CALIFORNIA  
**BRYCE: 530-526-9404**  
TEHAMA PADRE H690

**WAGER CATTLE**  
GETTYSBURG, SOUTH DAKOTA  
**LANNY: 605-769-1211**  
BRIDLE BIT RECHARGE K256

**WAGONHAMMER RANCH**  
ALBION, NEBRASKA  
**ALEX: 402-741-2809**  
WOODHILL COMPLETE A130-C2

**WHEELER MOUNTAIN RANCH**  
WHITEHALL, MONTANA  
**RON: 406-490-2734**  
WMR TIMELESS 081

**WHISTLING WINDS ANGUS**  
HINGHAM, MONTANA  
**DAVID: 406-390-1471**  
MILLARS HONDO 349

**WINDY CREEK CATTLE CO**  
SPENCER, SOUTH DAKOTA  
**JEREMY: 605-530-5909**  
BRIDLE BIT RECHARGE K256

**33 CATTLE COMPANY**  
KILLDEER, NORTH DAKOTA  
**EDWARD: 701-290-6644**  
SHIPWHEEL DREAMER 8522

*Thank You* for trusting **BEEF-360**  
as your marketing partner!

# BEEF-360 SIRE PARTNERS

## 2026 sales schedule

*MANY OF THESE SALES WILL  
FEATURE PROGENY AND SERVICES  
OF BEEF-360 EXCLUSIVE SIRES.*



JAN. 31	SCHAFF ANGUS VALLEY, ST. ANTHONY, ND
FEB. 10	KOUPAL'S B&B ANGUS, DANTE, SD
FEB. 14	CK/WAGER CATTLE, HIGHMORE, SD
FEB. 16	RAUSCH HEREFORDS, HOVEN, SD
FEB. 18	MILLAR ANGUS, STURGIS, SD
FEB. 19	VAN DYKE ANGUS, MANHATTAN, MT
FEB. 21	OVERMILLER RED ANGUS, SMITH CENTER KS
FEB. 23	CIRCLE L ANGUS, DILLON, MT
FEB. 23	REYES & RUSSELL ANGUS, WHEATLAND WY
FEB. 28	RAVENSROFT RED ANGUS, VALENTINE, NE
MARCH 1	WINDY CREEK CATTLE CO, SPENCER, SD
MARCH 2	STYLES ANGUS, BRENTFORD, SD
MARCH 7	MEAD FARMS, VERSAILLES, MO
MARCH 9	C-T RED ANGUS, MANHATTAN, MT
MARCH 9	DIX ANGUS RANCH, PLAINVILLE, KS
MARCH 11	R.A. BROWN RANCH, THROCKMORTON, TX
MARCH 12	WHEELER MOUNTAIN ANGUS, WHITEHALL, MT
MARCH 16	WHISTLING WINDS ANGUS, HINGHAM, MT
MARCH 17	BARTELS ANGUS, RIVERTON, NE
MARCH 18	WAGONHAMMER RANCH, BARTLETT, NE
MARCH 21	MUSGRAVE ANGUS, GRIGGSVILLE, IL
MARCH 21	FALLING TIMBER FARM, MARTHASVILLE, MO
MARCH 23	LUDDINGTON CATTLE, FREEDOM, OK
MARCH 24	FRENZEN ANGUS & HEREFORD, FULLERTON, NE
MARCH 24	HALL STOCK FARM, BERTHOLD, ND
MARCH 25	PETERSON GRAIN & CATTLE, HAVRE, MT
MARCH 26	GARTNER-DENOWH ANGUS RANCH, SIDNEY, MT
MARCH 27	LISCO/M DIAMOND ANGUS, CASPER, WY
APRIL 2	ARNTZEN ANGUS, HILGER, MT
APRIL 4	BENNETT - BIGGS - SWITZER SALE, GREEN CITY, MO
APRIL 4	BOTTS ANGUS RANCH, HUNTLEY, MT
APRIL 7	DAIGGER-ORR ANGUS, NORTH PLATTE, NE
APRIL 20	JORGENSEN LAND & CATTLE, IDEAL, SD
MAY 4	SPICKLER RANCH SOUTH, GLENFIELD, ND
MAY 9	MEAD FARMS, VERSAILLES, MO
OCTOBER 13	R A BROWN RANCH, THROCKMORTON, TX
OCTOBER 24	MEAD FARMS, VERSAILLES, MO
DECEMBER 5	FREDERICKSON RANCH, SPEARFISH, SD
DECEMBER 7	SPICKLER RANCH NORTH, GLENFIELD, ND
DECEMBER 9	SHIPWHEEL CATTLE CO., CHINOOK, MT
DECEMBER 12	COWBOY LOGIC, TALMO, GA

# Dakota AG

## INSURANCE

**Livestock • Equine • Farm & Ranch • Crop • LRP • PRF**

### Livestock Division:

- All Risk Mortality
  - Purebred/Seedstock Cattle
  - Bucking Bulls
  - Bison, Breeding Sheep, Goats & Swine
  - Working Dogs
  - Alpacas, Llamas & Exotics
- Livestock Confinement, Feedlot & Pasture
- Livestock Auction Markets, Packers & Stockyards
- Livestock Care Custody & Control
- Motor Truck Cargo
- Frozen Semen/Embryos stationary or in transit.

### Equine Division:

- All Risk Mortality
- Stallion Infertility (ASD)
- Major Medical/Surgical Options
- Private Horse Owner's Liability Coverage

### Farm & Ranch:

We insure all sizes of farm & ranch operations throughout the Midwest. We have access to every major carrier in the United States, don't hesitate to call an agent for a FREE-NO OBLIGATION quote today!

### Crop / LRP & PRF Division:

- LRP offers protection against unexpected future declines in the market value of cattle & swine.
- PRF covers pasture, rangeland, or forage for perennial haying &/or grazing purposes. It's designed to help protect a producer's operation from the risks of forage loss due to the lack of precipitation.



*Call an agent today to attend your annual production sale or to obtain a free, no obligation quote on all of your insurance needs!*



**Jared Mohnen**  
Principal/Agent  
605-999-4475



**Stacy Clauson**  
Office Manager



**Lashea Bickel**  
Agent



**Jennifer Krell**  
Agent



**Vince Boddicker**  
Agent



**Karlee Sailer**  
Agent



**Claire Kayser**  
CSR

**721 W Havens Ave • Mitchell, SD 57301**  
Office: 605-990-5355 • Fax: 605-996-7507  
dakotaaginsurance.com

Livestock Dept: [livestock@dakotaaginsurance.com](mailto:livestock@dakotaaginsurance.com)  
Billing Dept: [billing@dakotaaginsurance.com](mailto:billing@dakotaaginsurance.com)  
Claims Dept: [claims@dakotaaginsurance.com](mailto:claims@dakotaaginsurance.com)

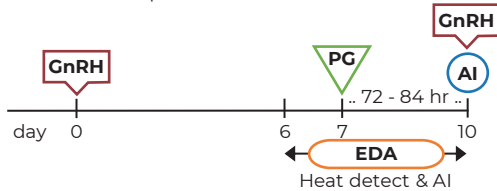
For additional synchronization protocols visit [BeefRepro.org](http://BeefRepro.org)

## HEAT DETECTION & TAI

For best results perform AI 12 ± 2 hr after detection of estrus.  
Use of estrus detection aids (EDA) is highly recommended.

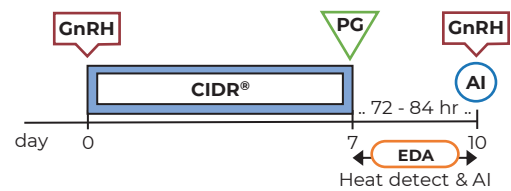
### Select Synch & TAI

Heat detect & AI days 6 to 10 and TAI with GnRH all non-responders 72 - 84 hr after PG.



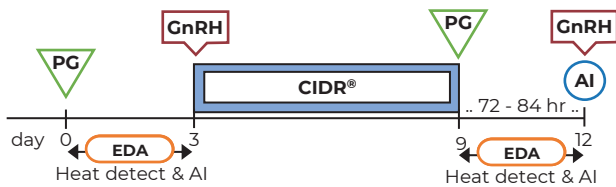
### Select Synch+CIDR® & TAI

Heat detect & AI days 7 to 10 and TAI with GnRH all non-responders 72 - 84 hr after PG.



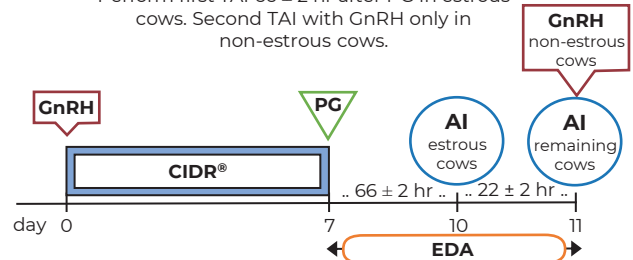
### PG 6-day CIDR® & TAI

Heat detect & AI days 0 to 3. Insert CIDR + GnRH to non-responders, heat detect & AI days 9 to 12. TAI with GnRH non-responders 72 - 84 hr after PG and CIDR removal.  
*Protocol may be used in heifers.*



### 7-day CO-Synch+CIDR® & Split-TAI

Perform first TAI 66 ± 2 hr after PG in estrous cows. Second TAI with GnRH only in non-estrous cows.



## FIXED-TIME AI

Time for Fixed-time AI (TAI) should be considered as the approximate average time of insemination based on the number of females to inseminate, labor, and facilities.

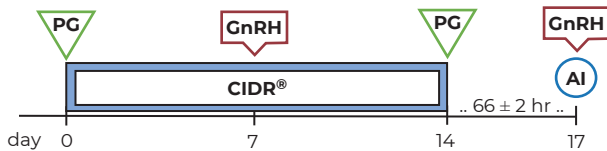
### 7-day CO-Synch+CIDR®

Perform TAI with GnRH at 60 to 66 hr after PG.



### 7&7 Synch

Perform TAI with GnRH at 66 ± 2 hr after CIDR removal.



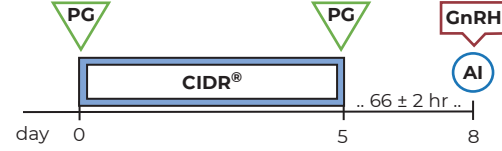
### 5-day CO-Synch+CIDR®

Perform TAI with GnRH at 72 ± 2 hr after CIDR removal. Two injections of PG 8 ± 2 hr apart are required for this protocol.



### Bos indicus PG 5-day+CIDR®

Perform TAI with GnRH at 66 ± 2 hr after CIDR removal.



EDA

Aervoe™, AIPaint™, Detect-her™, Estroetect™, Kamar™, Mark-her™, Paintstik™, Quick Shot™, Tell Tail™, Twist-Stik™

GnRH

Cystorelin®, Factrel®, Fertagy®, OvaCyst®, GONABreed®

PG

estroPLAN®, Estrumate®, Lutalyse®, Lutalyse® HighCon, ProstaMate®, SYNCHSURE™



SCAN

These protocol sheets were assembled by the **Beef Reproduction Task Force**. Programs are intended to promote sustainable food production systems by the beef industry through sound reproductive management practices for replacement heifers and postpartum cows. The Beef Reproduction Task Force recommends working with a licensed veterinarian for proper use and application of all reproductive hormones. **Approved 9-16-2025.** [www.beefrepro.org](http://www.beefrepro.org)

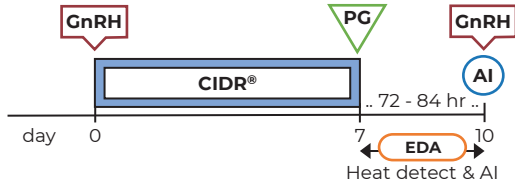
For additional synchronization protocols visit [BeefRepro.org](http://BeefRepro.org)

## HEAT DETECTION & TAI

For best results perform AI 12 ± 2 hr after detection of estrus.  
Use of estrus detection aids (EDA) is highly recommended.

### Select Synch+CIDR® & TAI

Heat detect & AI days 7 to 10 and TAI with GnRH all non-responders 72 - 84 hr after PG.



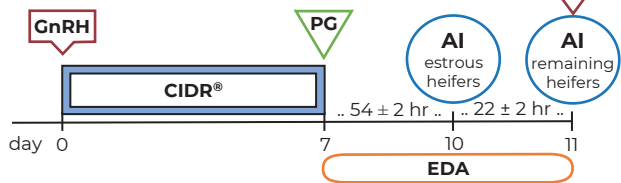
### MGA®-PG & TAI

Heat detect & AI days 33 to 36 and TAI with GnRH all non-responders 72 - 84 hr after PG.



### 7-day CO-Synch+CIDR® & Split-TAI

Perform first TAI 54 ± 2 hr after PG in estrous heifers. Second TAI with GnRH only in non-estrous heifers.



### 14-day CIDR®-PG & TAI

Heat detect & AI days 30 to 33 and TAI with GnRH all non-responders 72 ± 2 hr after PG.



## FIXED-TIME AI

Time for Fixed-time AI (TAI) should be considered as the approximate average time of insemination based on the number of females to inseminate, labor, and facilities.

### 5-day CO-Synch+CIDR®

Perform TAI at with GnRH 60 ± 4 hr after CIDR removal. Two injections of PG 8 ± 2 hr apart are required for this protocol.



### MGA®-PG

Perform TAI with GnRH at 72 ± 2 hr after PG.



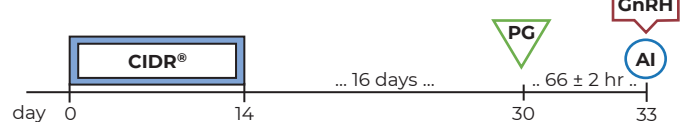
### 7-day CO-Synch+CIDR®

Perform TAI with GnRH at 54 ± 2 hr after PG.



### 14-day CIDR®-PG

Perform TAI with GnRH at 66 ± 2 hr after PG.



### 7&7 Synch

Perform TAI with GnRH at 54 ± 2 hr after CIDR removal.



EDA

Aervoe™, AIPaint™, Detect-her™, Estroject™, Kamar™, Mark-her™, Paintstik™, Quick Shot™, Tell Tail™, Twist-Stik™

GnRH

Cystorelin®, Factrel®, Fertagy1®, OvaCyst®, GONABreed®

PG

estroPLAN®, Estrumate®, Lutalyse®, Lutalyse® HighCon, ProstaMate®, SYNCHSURE™



SCAN

These protocol sheets were assembled by the **Beef Reproduction Task Force**. Programs are intended to promote sustainable food production systems by the beef industry through sound reproductive management practices for replacement heifers and postpartum cows. The Beef Reproduction Task Force recommends working with a licensed veterinarian for proper use and application of all reproductive hormones. **Approved 9-16-2026.** [www.beefrepro.org](http://www.beefrepro.org)



# GESTATION TABLE

BASED ON 283 DAYS

Date of Service	Calf Due	Date of Service	Calf Due	Date of Service	Calf Due	Date of Service	Calf Due	Date of Service	Calf Due	Date of Service	Calf Due	Date of Service	Calf Due	Date of Service	Calf Due	Date of Service	Calf Due	Date of Service	Calf Due	Date of Service	Calf Due	Date of Service	Calf Due
Jan 1	Oct 10	Feb 1	Nov 10	Mar 1	Dec 8	Apr 1	Jan 8	May 1	Feb 7	Jun 1	Mar 10	Jul 1	Apr 9	Aug 1	May 10	Sep 1	Jun 10	Oct 1	Jul 10	Nov 1	Aug 10	Dec 1	Sep 9
Jan 2	Oct 11	Feb 2	Nov 11	Mar 2	Dec 9	Apr 2	Jan 9	May 2	Feb 8	Jun 2	Mar 11	Jul 2	Apr 10	Aug 2	May 11	Sep 2	Jun 11	Oct 2	Jul 11	Nov 2	Aug 11	Dec 2	Sep 10
Jan 3	Oct 12	Feb 3	Nov 12	Mar 3	Dec 10	Apr 3	Jan 10	May 3	Feb 9	Jun 3	Mar 12	Jul 3	Apr 11	Aug 3	May 12	Sep 3	Jun 12	Oct 3	Jul 12	Nov 3	Aug 12	Dec 3	Sep 11
Jan 4	Oct 13	Feb 4	Nov 13	Mar 4	Dec 11	Apr 4	Jan 11	May 4	Feb 10	Jun 4	Mar 13	Jul 4	Apr 12	Aug 4	May 13	Sep 4	Jun 13	Oct 4	Jul 13	Nov 4	Aug 13	Dec 4	Sep 12
Jan 5	Oct 14	Feb 5	Nov 14	Mar 5	Dec 12	Apr 5	Jan 12	May 5	Feb 11	Jun 5	Mar 14	Jul 5	Apr 13	Aug 5	May 14	Sep 5	Jun 14	Oct 5	Jul 14	Nov 5	Aug 14	Dec 5	Sep 13
Jan 6	Oct 15	Feb 6	Nov 15	Mar 6	Dec 13	Apr 6	Jan 13	May 6	Feb 12	Jun 6	Mar 15	Jul 6	Apr 14	Aug 6	May 15	Sep 6	Jun 15	Oct 6	Jul 15	Nov 6	Aug 15	Dec 6	Sep 14
Jan 7	Oct 16	Feb 7	Nov 16	Mar 7	Dec 14	Apr 7	Jan 14	May 7	Feb 13	Jun 7	Mar 16	Jul 7	Apr 15	Aug 7	May 16	Sep 7	Jun 16	Oct 7	Jul 16	Nov 7	Aug 16	Dec 7	Sep 15
Jan 8	Oct 17	Feb 8	Nov 17	Mar 8	Dec 15	Apr 8	Jan 15	May 8	Feb 14	Jun 8	Mar 17	Jul 8	Apr 16	Aug 8	May 17	Sep 8	Jun 17	Oct 8	Jul 17	Nov 8	Aug 17	Dec 8	Sep 16
Jan 9	Oct 18	Feb 9	Nov 18	Mar 9	Dec 16	Apr 9	Jan 16	May 9	Feb 15	Jun 9	Mar 18	Jul 9	Apr 17	Aug 9	May 18	Sep 9	Jun 18	Oct 9	Jul 18	Nov 9	Aug 18	Dec 9	Sep 17
Jan 10	Oct 19	Feb 10	Nov 19	Mar 10	Dec 17	Apr 10	Jan 17	May 10	Feb 16	Jun 10	Mar 19	Jul 10	Apr 18	Aug 10	May 19	Sep 10	Jun 19	Oct 10	Jul 19	Nov 10	Aug 19	Dec 10	Sep 18
Jan 11	Oct 20	Feb 11	Nov 20	Mar 11	Dec 18	Apr 11	Jan 18	May 11	Feb 17	Jun 11	Mar 20	Jul 11	Apr 19	Aug 11	May 20	Sep 11	Jun 20	Oct 11	Jul 20	Nov 11	Aug 20	Dec 11	Sep 19
Jan 12	Oct 21	Feb 12	Nov 21	Mar 12	Dec 19	Apr 12	Jan 19	May 12	Feb 18	Jun 12	Mar 21	Jul 12	Apr 20	Aug 12	May 21	Sep 12	Jun 21	Oct 12	Jul 21	Nov 12	Aug 21	Dec 12	Sep 20
Jan 13	Oct 22	Feb 13	Nov 22	Mar 13	Dec 20	Apr 13	Jan 20	May 13	Feb 19	Jun 13	Mar 22	Jul 13	Apr 21	Aug 13	May 22	Sep 13	Jun 22	Oct 13	Jul 22	Nov 13	Aug 22	Dec 13	Sep 21
Jan 14	Oct 23	Feb 14	Nov 23	Mar 14	Dec 21	Apr 14	Jan 21	May 14	Feb 20	Jun 14	Mar 23	Jul 14	Apr 22	Aug 14	May 23	Sep 14	Jun 23	Oct 14	Jul 23	Nov 14	Aug 23	Dec 14	Sep 22
Jan 15	Oct 24	Feb 15	Nov 24	Mar 15	Dec 22	Apr 15	Jan 22	May 15	Feb 21	Jun 15	Mar 24	Jul 15	Apr 23	Aug 15	May 24	Sep 15	Jun 24	Oct 15	Jul 24	Nov 15	Aug 24	Dec 15	Sep 23
Jan 16	Oct 25	Feb 16	Nov 25	Mar 16	Dec 23	Apr 16	Jan 23	May 16	Feb 22	Jun 16	Mar 25	Jul 16	Apr 24	Aug 16	May 25	Sep 16	Jun 25	Oct 16	Jul 25	Nov 16	Aug 25	Dec 16	Sep 24
Jan 17	Oct 26	Feb 17	Nov 26	Mar 17	Dec 24	Apr 17	Jan 24	May 17	Feb 23	Jun 17	Mar 26	Jul 17	Apr 25	Aug 17	May 26	Sep 17	Jun 26	Oct 17	Jul 26	Nov 17	Aug 26	Dec 17	Sep 25
Jan 18	Oct 27	Feb 18	Nov 27	Mar 18	Dec 25	Apr 18	Jan 25	May 18	Feb 24	Jun 18	Mar 27	Jul 18	Apr 26	Aug 18	May 27	Sep 18	Jun 27	Oct 18	Jul 27	Nov 18	Aug 27	Dec 18	Sep 26
Jan 19	Oct 28	Feb 19	Nov 28	Mar 19	Dec 26	Apr 19	Jan 26	May 19	Feb 25	Jun 19	Mar 28	Jul 19	Apr 27	Aug 19	May 28	Sep 19	Jun 28	Oct 19	Jul 28	Nov 19	Aug 28	Dec 19	Sep 27
Jan 20	Oct 29	Feb 20	Nov 29	Mar 20	Dec 27	Apr 20	Jan 27	May 20	Feb 26	Jun 20	Mar 29	Jul 20	Apr 28	Aug 20	May 29	Sep 20	Jun 29	Oct 20	Jul 29	Nov 20	Aug 29	Dec 20	Sep 28
Jan 21	Oct 30	Feb 21	Nov 30	Mar 21	Dec 28	Apr 21	Jan 28	May 21	Feb 27	Jun 21	Mar 30	Jul 21	Apr 29	Aug 21	May 30	Sep 21	Jun 30	Oct 21	Jul 30	Nov 21	Aug 30	Dec 21	Sep 29
Jan 22	Oct 31	Feb 22	Dec 1	Mar 22	Dec 29	Apr 22	Jan 29	May 22	Feb 28	Jun 22	Mar 31	Jul 22	Apr 30	Aug 22	May 31	Sep 22	Jul 1	Oct 22	Jul 31	Nov 22	Aug 31	Dec 22	Sep 30
Jan 23	Nov 1	Feb 23	Dec 2	Mar 23	Dec 30	Apr 23	Jan 30	May 23	Mar 1	Jun 23	Apr 1	Jul 23	May 1	Aug 23	Jun 1	Sep 23	Jul 2	Oct 23	Aug 1	Nov 23	Sep 1	Dec 23	Oct 1
Jan 24	Nov 2	Feb 24	Dec 3	Mar 24	Dec 31	Apr 24	Jan 31	May 24	Mar 2	Jun 24	Apr 2	Jul 24	May 2	Aug 24	Jun 2	Sep 24	Jul 3	Oct 24	Aug 2	Nov 24	Sep 2	Dec 24	Oct 2
Jan 25	Nov 3	Feb 25	Dec 4	Mar 25	Jan 1	Apr 25	Feb 1	May 25	Mar 3	Jun 25	Apr 3	Jul 25	May 3	Aug 25	Jun 3	Sep 25	Jul 4	Oct 25	Aug 3	Nov 25	Sep 3	Dec 25	Oct 3
Jan 26	Nov 4	Feb 26	Dec 5	Mar 26	Jan 2	Apr 26	Feb 2	May 26	Mar 4	Jun 26	Apr 4	Jul 26	May 4	Aug 26	Jun 4	Sep 26	Jul 5	Oct 26	Aug 4	Nov 26	Sep 4	Dec 26	Oct 4
Jan 27	Nov 5	Feb 27	Dec 6	Mar 27	Jan 3	Apr 27	Feb 3	May 27	Mar 5	Jun 27	Apr 5	Jul 27	May 5	Aug 27	Jun 5	Sep 27	Jul 6	Oct 27	Aug 5	Nov 27	Sep 5	Dec 27	Oct 5
Jan 28	Nov 6	Feb 28	Dec 7	Mar 28	Jan 4	Apr 28	Feb 4	May 28	Mar 6	Jun 28	Apr 6	Jul 28	May 6	Aug 28	Jun 6	Sep 28	Jul 7	Oct 28	Aug 6	Nov 28	Sep 6	Dec 28	Oct 6
Jan 29	Nov 7			Mar 29	Jan 5	Apr 29	Feb 5	May 29	Mar 7	Jun 29	Apr 7	Jul 29	May 7	Aug 29	Jun 7	Sep 29	Jul 8	Oct 29	Aug 7	Nov 29	Sep 7	Dec 29	Oct 7
Jan 30	Nov 8			Mar 30	Jan 6	Apr 30	Feb 6	May 30	Mar 8	Jun 30	Apr 8	Jul 30	May 8	Aug 30	Jun 8	Sep 30	Jul 9	Oct 30	Aug 8	Nov 30	Sep 8	Dec 30	Oct 8
Jan 31	Nov 9			Mar 31	Jan 7			May 31	Mar 9			Jul 31	May 9	Aug 31	Jun 9			Oct 31	Aug 9			Dec 31	Oct 9



**DISCLAIMER OF WARRANTY - BEEF-360, LLC, its agents or employees, cannot and do not guarantee the conception rate, quality, or productivity to be obtained in connection with the use of its products or services. BEEF-360, LLC makes no warranties whatsoever, expressed or implied, which extend beyond the description of its products and hereby disclaims all warranties for a particular purpose.**

**BEEF-360 Exclusive Sires are available directly from BEEF-360, LLC and authorized Independent Sales Agents & Distributors.**

**TO ORDER SEMEN AND CERTIFICATES,  
VISIT OUR WEBSITE AT:  
[WWW.BEEF-360.COM](http://WWW.BEEF-360.COM)**



OR CALL, TEXT OR EMAIL:

KEENAN SWITZER  
660-734-0510  
keenan@beef-360.com

JERRY TERRILL  
214-726-2759  
jerry@beef-360.com



## Direct Order Terms

**10% DISCOUNT**  
ON ORDERS OF 50 UNITS OR MORE

**20% DISCOUNT**  
ON ORDERS OF 100 UNITS OR MORE

**FREE STANDARD SHIPPING**  
ON SEMEN ORDERS OVER 60 UNITS  
(\$35 HANDLING FEE ON ALL SHIPPED ORDERS)



## Sire Index

BREED	NAME	REG #	CANE CODE	semen	cert	PAGE
ANGUS	CIRCLE L LANDMARK	19148655	237AN3663	\$20	\$40	8
ANGUS	DLB LANDMAN 2223	20732131	49AN3915	\$25	\$40	15
ANGUS	E/T MATERNAL ROOTS 318	20977741	271AN1048	\$30	\$40	12
ANGUS	GDAR JUSTIFIED 914	19464109	271AN4431	\$30	\$40	6
ANGUS	IDEAL 0026 RITO OF REN	19888476	271AN4798	\$25	\$40	11
ANGUS	J D PAY DIRT 546	18241949	271AN3814	\$20	\$40	10
ANGUS	KOUPALS B&B BRIDGER 2041	20515570	271AN530	\$25	\$40	10
ANGUS	KOUPALS B&B HERDSMAN 4026	21102648	271AN1105	\$30	\$40	1
ANGUS	LD CAPITALIST 316	17666102	271AN3628	\$50*	\$40	5
ANGUS	M DIAMOND RANAHAN 111	20258264	271AN4970	\$30	\$40	2
ANGUS	MILLARS DUKE 816	19343216	316AN0261	\$30	\$40	8
ANGUS	MILLARS HONDO 349	20845840	271AN0712	\$30	\$40	9
ANGUS	MUSGRAVE JUMBO	19436794	271AN635	\$30	\$40	4
ANGUS	MUSGRAVE MOXLEY	19790284	49AN3722	\$20	\$40	5
ANGUS	PARTISOVER DEEP ROOTS	20004765	AN978	\$30	\$40	12
ANGUS	PGC NORTHERN LIGHTS	20806984	271AN1466	\$30	\$40	13
ANGUS	PYRAMID BLACK HILLS 1032	20133744	272AN1905	\$25	\$40	18
ANGUS	S A V DOWNSPOUT 1878	20159750	48AN1714	\$25	\$40	18
ANGUS	SHIPWHEEL BEAR PAW 4606	21285174	271AN1456	\$30	\$40	7
ANGUS	SHIPWHEEL BLS BRAVADO 1536	20364988	271AN0234	\$25	\$40	16
ANGUS	SHIPWHEEL DREAMER 8522	19534719	271AN4321	\$25	\$40	19
ANGUS	S THRIVE JAS 5515	18159105	271AN3613	\$25	\$40	20
ANGUS	S WRANGLER 830	19198304	271AN4287	\$25	\$40	3
ANGUS	TEHAMA PADRE H690	19751663	106AN4929	\$25	\$40	14
ANGUS	VDAR CONFLUENCE 4273	20672987	271AN1043	\$30	\$40	17
ANGUS	WMR TIMELESS 081	17083256	271AN3632	\$25	\$40	20
ANGUS	WOODHILL COMPLETE A130-C2	18248948	316AN0049	\$25	\$40	14
SIMMENTAL	BRIDLE BIT RECHARGE	4058272	106SM1048	\$50		25
SIM-ANGUS	J-J MR AMERICAN EAGLE 938G	3550862	49SM2063	\$30		24
SIM-ANGUS	TUEL WINCHESTER A303	2921978	59SM276	\$25		24
POLLED HEREFORD	CSU HOUSTON RAM 3212	44565637	129HP0546	\$30	\$50	27
POLLED HEREFORD	FTF CONFIDENCE 6113D	43751234	49HP3243	\$25	\$50	29
POLLED HEREFORD	FTF RELEVANT 831F	43911639	49HP3275	\$25	\$50	28
POLLED HEREFORD	PYRAMID DAYBREAK 9165	44051992	272HP0104	\$30	\$50	28
RED ANGUS	C-T OPEN RANGE 3050	4799552	271AR6250	\$30		31
RED ANGUS	C-T REPUTATION 0094	4296453	106AR6794	\$30		33
RED ANGUS	LACY MOV'N ON 417 063G	4237524	49AR3448	\$30		32
RED ANGUS	RAVN LINEBACKER C537	3486945	272AR0537	\$25		32

PRICING AND AVAILABILITY SUBJECT TO CHANGE WITHOUT NOTICE.

MOST BEEF-360 SEMEN IS PACKAGED IN 1/2 CC STRAWS

**FOR THE MOST CURRENT LISTING  
OF SIRES AND AVAILABILITY  
GO TO [WWW.BEEF-360.COM](http://WWW.BEEF-360.COM)**

EPDS listed in this Genetics Guide current on 1/08/2026



Presorted  
Standard Mail  
US Postage  
**PAID**  
LivestockDirect

**CELEBRATING 10 YEARS OF MATERNAL FOCUS**

*Check out these exciting new Sires!*



Follow us on Facebook and Instagram



Instagram

[WWW.BEEF-360.COM](http://WWW.BEEF-360.COM)